

WAAS CH 56313 W12A	APP CRS 124°	Rwy Idg TDZE 8 Apt Elev 9
--	------------------------	---

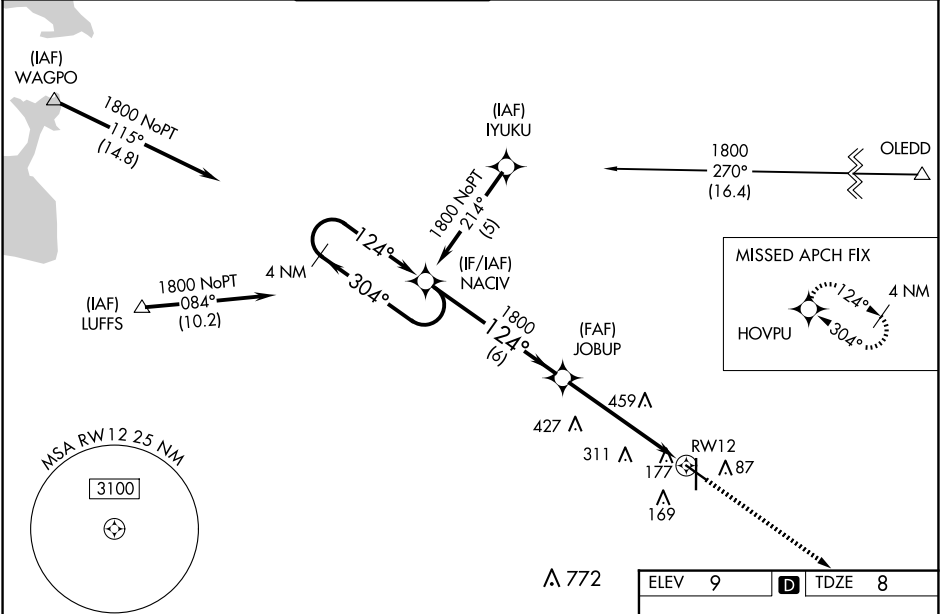
RNAV (GPS) RWY 12
HOUMA-TERREBONNE (HUM)

⚠ For uncompensated Baro-VNAV systems, LNAV/VNAV NA below -15°C (5°F) or above 49°C (120°F). DME/DME RNP-0.3 NA. Visibility reduction by helicopters NA.

⚠ When local altimeter setting not received, use Louis Armstrong New Orleans Intl altimeter setting: increase LPV DA to 370 feet and all visibilities ¼ SM; increase LNAV/VNAV DA to 567 feet and all visibilities ¼ SM; increase all MDAs 80 feet and visibility Cats B, C and D ¼ SM. Baro-VNAV NA when using Louis Armstrong New Orleans Intl altimeter setting.

MISSED APPROACH: Climb to 1800 direct HOVPU and hold.

ATIS 120.25	NEW ORLEANS APP CON 118.9 350.35	HOUMA TOWER ★ 125.3 (CTAF) 0 346.3	GND CON 123.875	CLNC DEL 118.9 (When twr closed)	UNICOM 122.95
-----------------------	--	--	---------------------------	---	-------------------------



4 NM Holding Pattern				
VGSI and RNAV glidepath not coincident (VGSI Angle 3.00/TCH 43).				
NACIV JOBUP RWY12				
GP 3.00° TCH 45				
6 NM 5.4 NM				
CATEGORY	A	B	C	D
LPV DA	293-7 ⁸ / ₈ 285 (300-7 ⁸ / ₈)			
LNAV/VNAV DA	490-13 ⁸ / ₈ 482 (500-13 ⁸ / ₈)			
LNAV MDA	680-1	672 (700-1)	680-17 ⁸ / ₈	672 (700-17 ⁸ / ₈)
CIRCLING	680-1	671 (700-1)	760-2¼ 751 (800-2¼)	760-2½ 751 (800-2½)

