


LOC I-HUM 108.5	APP CRS 179°	Rwy Ldg TDZE Apt Elev 6143 8 9	ILS or LOC RWY 18 HOUMA-TERREBONNE (HUM)	
---------------------------	------------------------	--	---	--

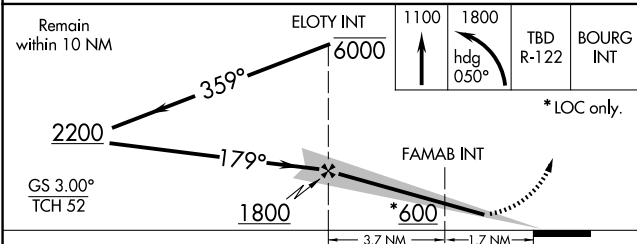
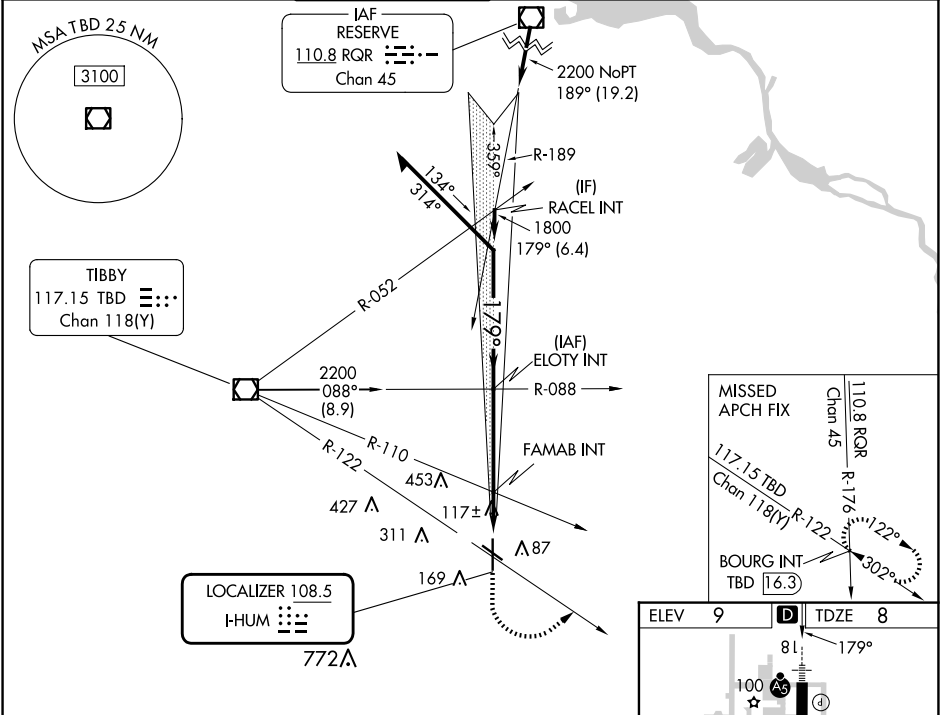
▼ When local altimeter setting not received, use Louis Armstrong New Orleans Intl altimeter setting: increase DA to 285 feet; increase all MDA 80 feet and S-LOC 18 Cat C/D visibility ¼ SM and Circling Cat C/D visibility ¼ SM. For inop ALS increase S-LOC 18 Cat C/D visibility to 1 SM. For inop ALS when using Louis Armstrong New Orleans Intl altimeter setting increase S-ILS 18 all Cats visibility ⅓ SM.

MALS R



MISSED APPROACH: Climb to 1100 then climbing left turn to 1800 on heading 050° and TBD VOR/DME R-122 to BOURG INT/TBD 16.3 DME and hold.

ATIS 120.25	NEW ORLEANS APP CON 118.9 350.35	HOUMA TOWER ★ 125.3 (CTAF) 0 346.3	GND CON 123.875	CLNC DEL 118.9 (When twr closed)	UNICOM 122.95
-----------------------	--	--	---------------------------	---	-------------------------



CATEGORY	A	B	C	D	<div>REIL Rwys 12, 30, and 36 ① 36 MIRL Rwys 12-30 and 18-36 ① FAF to MAP 5.4 NM</div> <table><tr><td>Knots</td><td>60</td><td>90</td><td>120</td><td>150</td><td>180</td></tr><tr><td>Min:Sec</td><td>5:24</td><td>3:36</td><td>2:42</td><td>2:10</td><td>1:48</td></tr></table>	Knots	60	90	120	150	180	Min:Sec	5:24	3:36	2:42	2:10	1:48
Knots	60	90	120	150		180											
Min:Sec	5:24	3:36	2:42	2:10		1:48											
S-ILS 18	208-½ 200 (200-½)																
S-LOC 18	380-½	372 (400-½)	380-⅝	372 (400-⅝)													
CIRCLING	480-1	471 (500-1)	760-2¼ 751 (800-2¼)	760-2½ 751 (800-2½)													

SC-4, 07 AUG 2025 to 04 SEP 2025

SC-4, 07 AUG 2025 to 04 SEP 2025