
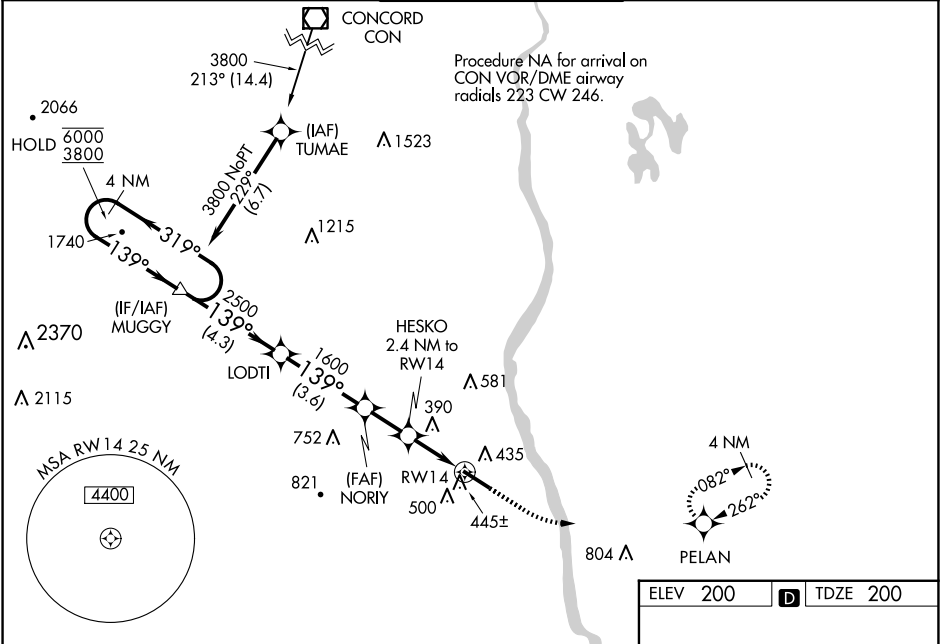


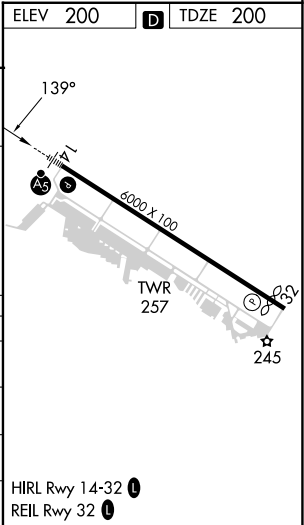
WAAS CH 97730 W14A	APP CRS 139°	Rwy Idg TDZE 200 Apt Elev 200
--	------------------------	---

RNAV (GPS) RWY 14
BOIRE FLD (ASH)

RNP APCH - GPS.			<div>MALSRR</div> <div></div>	MISSED APPROACH: Climb to 800 then climbing left turn to 2000 direct PELAN and hold.	
<div><div><div><div><div></div><div></div></div><div><div></div><div></div></div></div><div><div></div><div></div></div></div><div>For uncompensated Baro-VNAV systems, LNAV/VNAV NA below -15°C or above 54°C. For inop ALS, increase LNAV/VNAV all Cats visibility to 1% SM and LNAV Cat C/D visibility to 1% SM.</div></div>					
ATIS 125.1	BOSTON APP CON 124.9 269.075	NASHUA TOWER ★ 133.2 (CTAF) 0	GND CON 121.8	CLNC DEL 121.8	



4 NM Holding Pattern		MUGGY	LODTI	NORIY	HESKO 2.4 NM to RW14	800	2000	PELAN
6000 ← 319° 3800 → 139°		2500	1600	1000	1.4 NM to RW14			
GP 3.00° TCH 47								
		4.3 NM	3.6 NM	1.9 NM	1 NM	1.4 NM		
CATEGORY	A	B	C	D				
LPV DA	400-1/2		200 (200-1/2)					
LNAV/VNAV DA	614-3/4		414 (500-3/4)					
LNAV MDA	700-1/2	500 (500-1/2)	700-1		500 (500-1)			
CIRCLING	840-1 640 (700-1)	860-1 660 (700-1)	920-2 720 (800-2)	980-2 1/2 780 (800-2 1/2)				



NE-1, 07 AUG 2025 to 04 SEP 2025

NE-1, 07 AUG 2025 to 04 SEP 2025