

WAAS CH <b>97407</b> <b>W25A</b>	APP CRS <b>252°</b>	Rwy Idg TDZE Apt Elev	<b>5503</b> <b>1817</b> <b>1817</b>
--	------------------------	-----------------------------	---

RNAV (GPS) RWY 25

DUBOIS RGNL (DUJ)

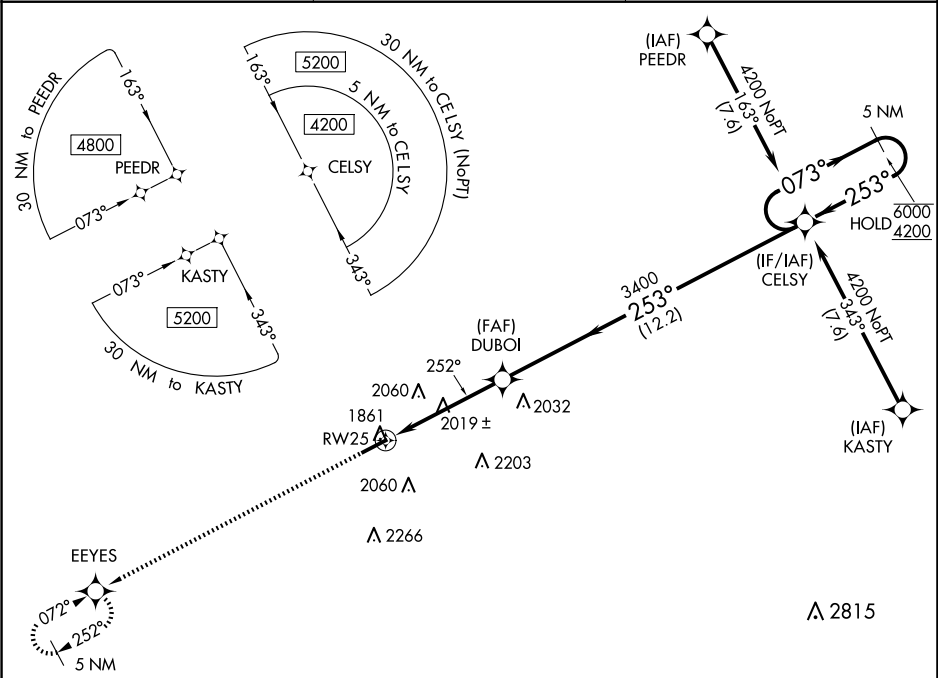
RNP APCH.

Circling NA for Cat D south of Rwy 7-25. For uncompensated Baro-VNAV systems, LNAV/VNAV NA below -21°C or above 54°C. For inop ALS increase LNAV Cat C/D visibility to 1½ SM.

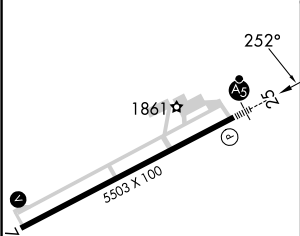
MALSR

MISSED APPROACH: Climb to 4200 direct EEYES and hold.

ASOS <b>119.025</b>	CLEVELAND CENTER <b>126.725 291.65</b>	UNICOM <b>123.0 (CTAF) 0</b>
------------------------	---	---------------------------------



ELEV <b>1817</b>	<b>D</b>	TDZE <b>1817</b>
------------------	----------	------------------



4200

EEYES

5 NM

Holding Pattern

DUBOI

3400

CELSY

6000

RW25

1861

1.3

3.5 NM

12.2 NM

CATEGORY	A	B	C	D
LPV DA	2017-½ 200 (200-½)			
LNAV/VNAV DA	2140-½ 323 (400-½)			
LNAV MDA	2280-½ 463 (500-½)		2280-1 463 (500-1)	
<b>C</b> CIRCLING	2320-1 503 (600-1)	2360-1 543 (600-1)	2380-1½ 563 (600-1½)	2400-2 583 (600-2)

\*LNAV only.

\*1.3 NM to RW25

GP 3.00°

TCH 57