

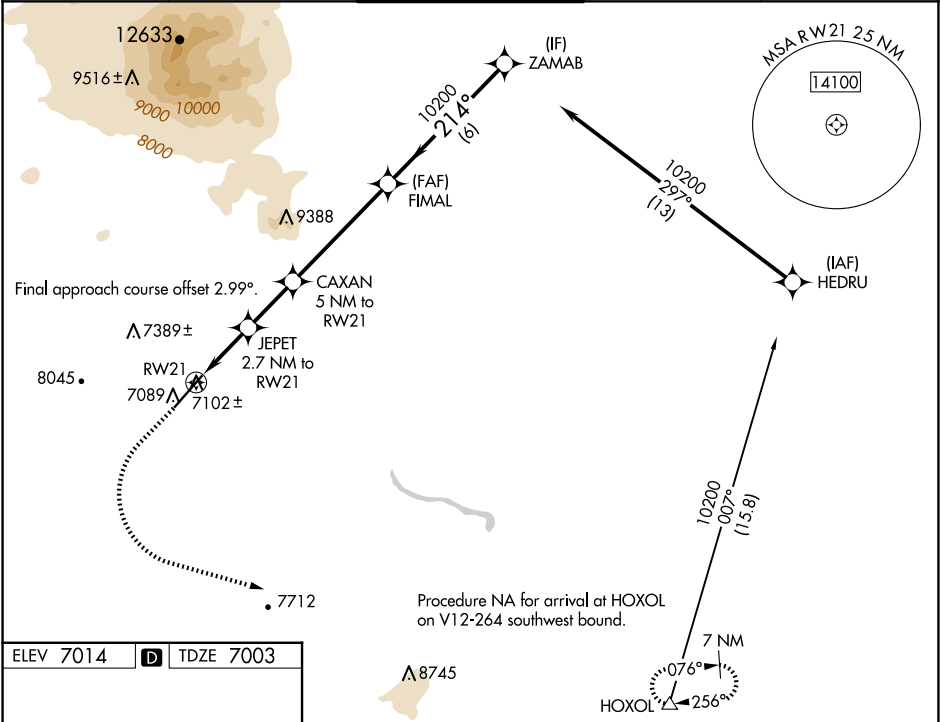
WAAS CH 99341 W21A	APP CRS 214°	Rwy Idg TDZE Apt Elev	7000 7003 7014
--	------------------------	-----------------------------	---

RNAV (GPS) RWY 21

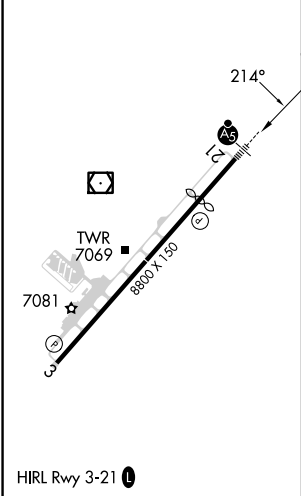
FLAGSTAFF PULLIAM (F'L.G)




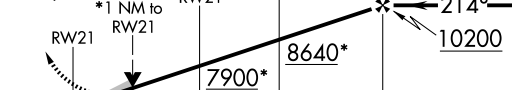

<div><div>▼</div><div>▲</div></div> <div>For uncompensated Baro-VNAV systems, LNAV/VNAV NA below -19 °C (2°F) or above 44°C (111°F). DME/DME RNP-0.3 NA. For inop ALS, increase LPV all Cats visibility to ¾ SM.</div>	<div>MALSR</div> <div></div>	MISSED APPROACH: Climb to 7500 then climbing left turn to 10800 direct HOXOL and hold.
--	------------------------------	--

ATIS 125.8	PHOENIX APP CON 126.375 236.775	FLAGSTAFF TOWER ★ 134.55 (CTAF) 239.25	GND CON 121.9	UNICOM 122.95
----------------------	---	--	-------------------------	-------------------------



ELEV 7014	D	TDZE 7003
-----------	----------	-----------



7500	10800	HOXOL					FINAL		ZAMAB	
			JEPET 2.7 NM to RW21		CAXAN 5 NM to RW21		10200			
*LNAV only			*1 NM to RW21		8640*		214°	10200	GP 3.00° TCH 52	
			7900*							
CATEGORY			A		B		C		D	
LPV DA			7258-½		255 (300-½)					
LNAV/ VNAV DA			7319-⅝		316 (400-⅝)					
LNAV MDA			7360-½ 357 (400-½)		7360-⅝ 357 (400-⅝)					
 CIRCLING			7520-1 506 (600-1)		7560-1 546 (600-1)		8100-3 1086 (1100-3)		8560-3 1546 (1600-3)	