

WAAS CH 65639 W19A	APP CRS 184°	Rwy Idg TDZE 620 Apt Elev 620
--	------------------------	---

RNAV (GPS) RWY 19

CARIBOU MUNI (CAR)

RNP APCH.

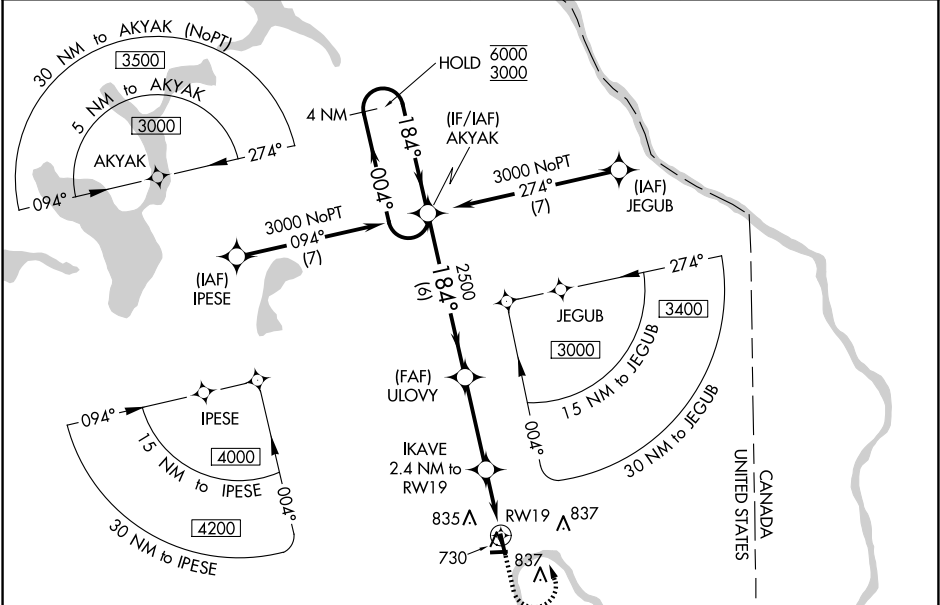
▼

▲

Baro-VNAV and VDP NA when using Presque Isle altimeter setting. Rwy 19 helicopter visibility reduction below ¾ SM NA. For uncompensated Baro-VNAV systems, LNAV/VNAV NA below -21°C or above 54°C. Circling Rwy 1, 11, 29 NA at night. When local altimeter setting not received, use Presque Isle altimeter setting and increase all DAs 49 feet and all MDAs 60 feet. Increase LNAV Cats C, D visibility ¼ SM and Circling Cat D visibility ¼ SM.

MISSED APPROACH:
Climb to 1300 then climbing left turn to 3000 direct AKYAK and hold.

ASOS 135.125	BOSTON CENTER 124.75 239.05	CLNC DEL 124.75	UNICOM 122.8 (CTAF) 0
------------------------	---------------------------------------	---------------------------	---------------------------------



4 NM Holding Pattern

AKYAK

ULOVY

IKAVE

1300

3000

AKYAK

6000

3000

GP 3.00° TCH 40

2500

2500

1420

1 NM to RWY 19

RWY 19

6 NM

3.4 NM

1.4 NM

1 NM

CATEGORY	A	B	C	D
LPV DA		870-1	250 (300-1)	
LNAV/VNAV DA		894-1	274 (300-1)	
LNAV MDA		980-1	360 (400-1)	
CIRCLING	1140-1	520 (600-1)	1140-1½ 520 (600-1½)	1400-2½ 780 (800-2½)

ELEV 620

TDZE 620

184°

61

4003 X 100

3016 X 75

11

29

MIRL Rwy 1-19 and 11-29 0

NE-1, 07 AUG 2025 to 04 SEP 2025

NE-1, 07 AUG 2025 to 04 SEP 2025