

WAAS CH 77539 W01A	APP CRS 004°	Rwy Idg TDZE 620 Apt Elev 620	4003
--	------------------------	---	-------------

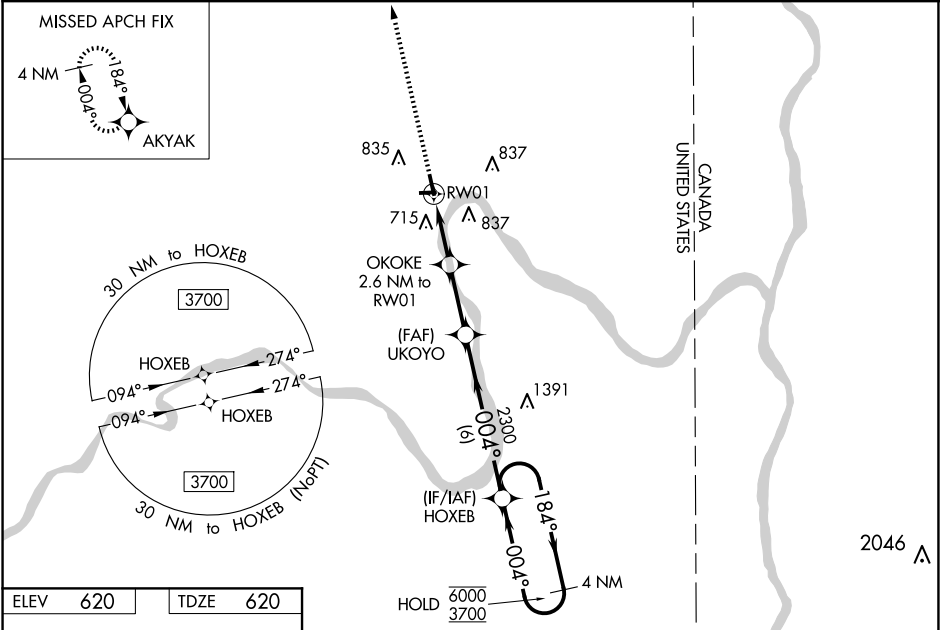
RNAV (GPS) RWY 1
CARIBOU MUNI (CAR)

RNP APCH.

Rwy 1 helicopter visibility reduction below 1 SM NA. Baro-VNAV NA when using Presque Isle altimeter setting. For uncompensated Baro-VNAV systems, LNAV/VNAV NA below -21°C or above 54°C. Straight-in Rwy 1 NA at night. Circling Rwy 1, 11, 29 NA at night. When local altimeter setting not received, use Presque Isle altimeter setting and increase all DAs 49 feet and all MDAs 60 feet. Increase LNAV MDA Cat C & D visibility 1/8 SM, Circling Cat D visibility 1/4 SM.

MISSED APPROACH:
Climb to 3000 direct
AKYAK and hold.

ASOS 135.125	BOSTON CENTER 124.75 239.05	CLNC DEL 124.75	UNICOM 122.8 (CTAF) 0
------------------------	---------------------------------------	---------------------------	---------------------------------



ELEV 620 TDZE 620

3000 AKYAK

* LNAV only

UKOYO 2300

OKOKE 2.6 NM to RW01

RW01

2.6 NM 2.6 NM 6 NM

HOXEB

184° 004°

6000 3700

GP 3.00° TCH 40

61

4003 X 100

3016 X 75

004°

62

MIRL Rwy 1-19 and 11-29 0

CATEGORY	A	B	C	D
LPV DA		870-1	250 (300-1)	
LNAV/VNAV DA		872-1	252 (300-1)	
LNAV MDA		980-1	360 (400-1)	
CIRCLING	1140-1	520 (600-1)	1140-1½ 520 (600-1½)	1400-2½ 780 (800-2½)

NE-1, 07 AUG 2025 to 04 SEP 2025

NE-1, 07 AUG 2025 to 04 SEP 2025