

VORTAC CRP 115.5 Chan 102	APP CRS 192°	Rwy Ldg 6080 TDZE 42 Apt Elev 46
---	------------------------	---

VOR or TACAN RWY 18
CORPUS CHRISTI INTL (CRP)

DME required.

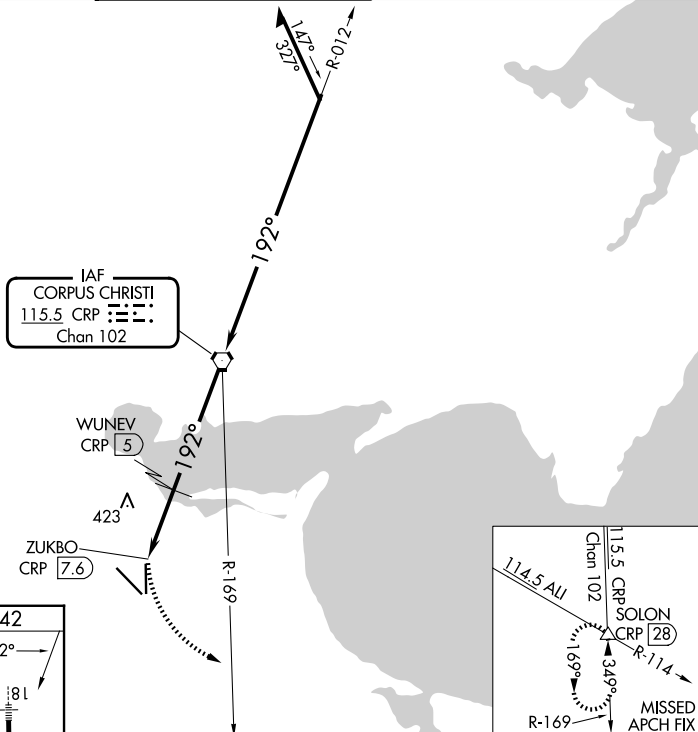
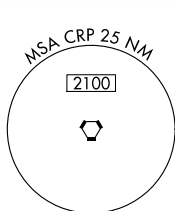


Rwy 18 helicopter visibility reduction below $\frac{3}{4}$ SM NA.
Inop table does not apply.

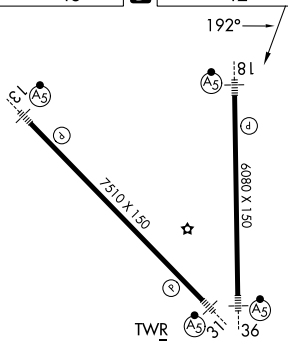


MISSED APPROACH: Climbing left turn to 2000 on heading 150° and CRP VORTAC R-169 to SOLON INT/CRP 28 DME and hold.

ATIS 126.8	CORPUS APP CON 120.9 348.725	CORPUS TOWER 119.4 257.8	GND CON 121.9 269.15	CLNC DEL 118.55
---------------	---------------------------------	-----------------------------	-------------------------	--------------------



ELEV 46	D	TDZE 42
---------	----------	---------



H|RL Rwys 13-31 and 18-36

Amdt 29 02NOV23

27°46'N-97°30'W

CORPUS CHRISTI INTL (CRP)
VOR or TACAN RWY 18