

APP CRS	Rwy Ldg	<b>6080</b>
<b>355°</b>	TDZE	<b>40</b>
	Apt Elev	<b>44</b>

RNAV (RNP) Z RWY 36  
CORPUS CHRISTI INTL (CRP)

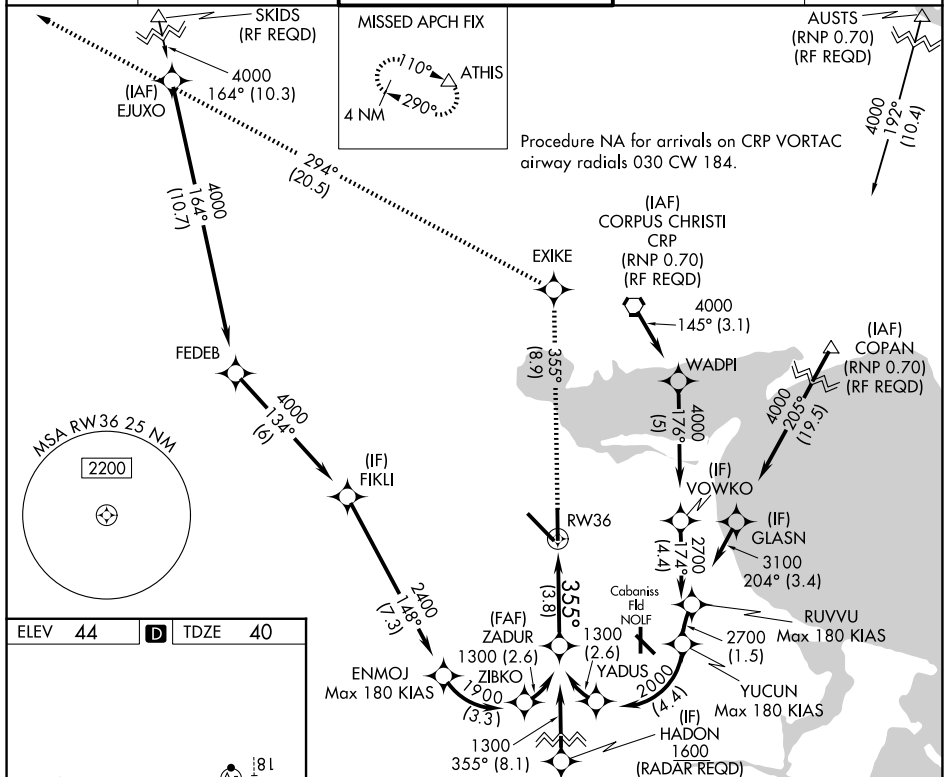
**T** For uncompensated Baro-VNAV systems, procedure NA below -1°C (-31°F) or above 54°C (130°F). GPS required. For inop MALS, increase RNP 0.11 visibility all Cnts to RVR 4000. For inop MALS, increase RNP 0.30 visibility all Cnts to RVR 5900.

MALSR

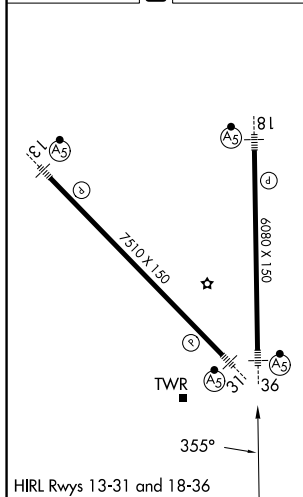


**MISSED APPROACH:** Climb to 2000 on track 355° to EXIKE and on track 294° to ATHIS and hold.

ATIS 126.8	CORPUS APP CON 120.9 348.725	CORPUS TOWER 119.4 257.8	GND CON 121.9 269.15	CLNC DEL 118.55
---------------	---------------------------------	-----------------------------	-------------------------	--------------------



ELEV 44	<b>D</b>	TDZE 40
---------	----------	---------



2000 ↑ tr 355°	EXIKE ✱	tr 294°	ATHIS △	See Planview for multiple IF locations.	ZADUR 1300	
CATEGORY	A		B		C	D
RNP 0.11 DA			290/24		250 (300-½)	
RNP 0.30 DA			400/34		360 (400-⅝)	

**AUTHORIZATION REQUIRED**