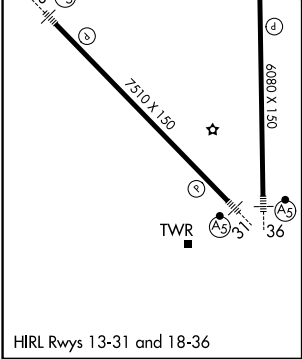
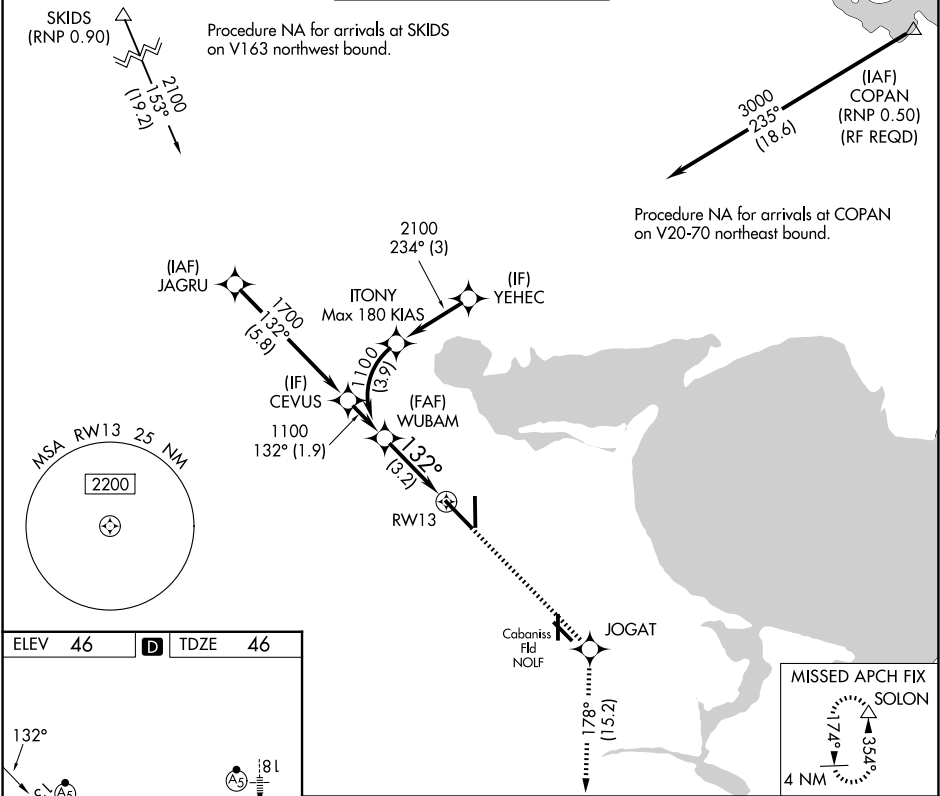


APP CRS	Rwy Ldg	7510
132°	TDZE	46
	Apt Elev	46

RNAV (RNP) Z RWY 13

CORPUS CHRISTI INTL (CRP)

<div><div></div><div>For uncompensated Baro-VNAV systems, procedure NA below -1°C (31°F) or above 54°C (130°F). GPS required.</div></div>			<div>MALSR<div></div></div>	MISSED APPROACH: Climb to 2000 on track 132° to JOGAT and on track 178° to SOLON and hold.
ATIS	CORPUS APP CON	CORPUS TOWER	GND CON	CLNC DEL
126.8	120.9 348.725	119.4 257.8	121.9 269.15	118.55



2000 ↑ tr 132°		JOGAT 	SOLON 	See planview for multiple IF locations.	
		tr 178°			
CATEGORY		A	B	C	D
RNP 0.30 DA		394/30		348 (400-%)	
AUTHORIZATION REQUIRED					