

WAAS CH <b>53635</b> <b>W18A</b>	APP CRS <b>175°</b>	Rwy Ldg <b>6080</b> TDZE <b>42</b> Apt Elev <b>46</b>
--	------------------------	---

RNAV (GPS) RWY 18

CORPUS CHRISTI INTL (CRP)

RNP APCH - GPS.

▼

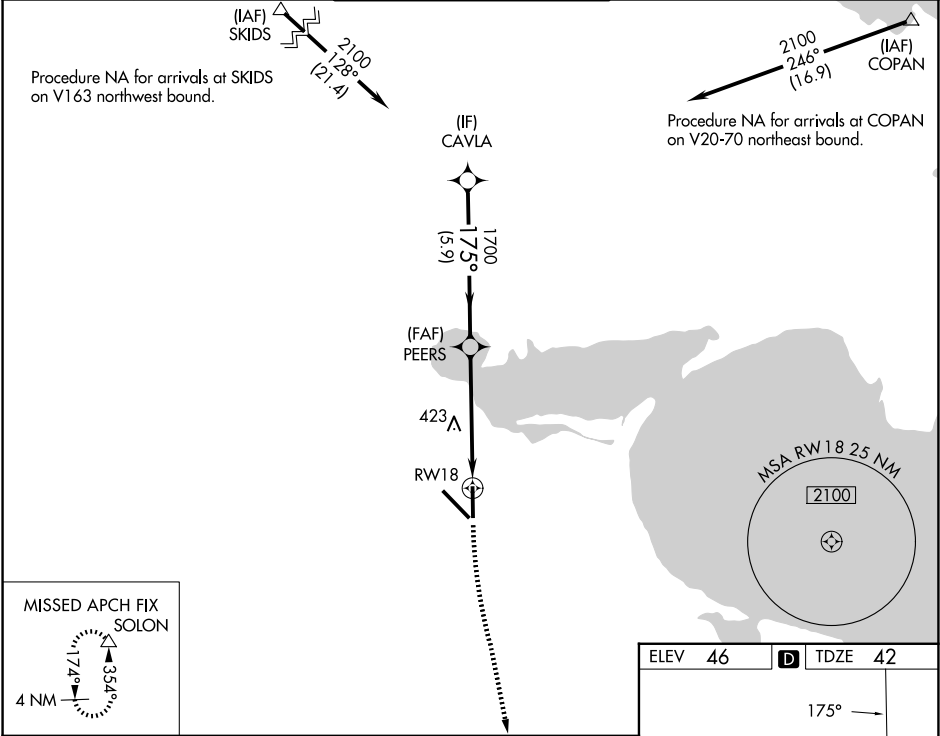
▲

For uncompensated Baro-VNAV systems, LNAV/VNAV NA below 1°C or above 54°C. For inop ALS, increase LPV Cat E visibility to ¾ SM, all LNAV/VNAV visibilities to ¾ SM, and LNAV Cat C, D, and E visibility to 1¼ SM.

MAISR

MISSED APPROACH: Climb to 500 then climbing left turn to 2000 direct SOLON and hold.

ATIS <b>126.8</b>	CORPUS APP CON <b>120.9 348.725</b>	CORPUS TOWER <b>119.4 257.8</b>	GND CON <b>121.9 269.15</b>	CLNC DEL <b>118.55</b>
----------------------	--	------------------------------------	--------------------------------	---------------------------



CAVLA					
2100					
GP 3.00° TCH 50					
5.9 NM					
PEERS					
1700					
1.8 NM to RW18					
RW18					
3.3 NM					
1.8 NM					
CATEGORY	A	B	C	D	E
LPV DA	242-½		200 (200-½)		
LNAV/VNAV DA	345-½		303 (300-½)		
LNAV MDA	660-½	618 (700-½)	660-1⅜ 618 (700-1⅜)		
CIRCLING	660-1 614 (700-1)	780-1 734 (800-1)	820-2¼ 774 (800-2¼)	820-2½ 774 (800-2½)	820-2¾ 774 (800-2¾)

