

LOC/DME I-OYC <b>109.5</b> Chan <b>32</b>	APP CRS <b>355°</b>	Rwy Ldg <b>6080</b> TDZE <b>40</b> Apt Elev <b>46</b>
---	------------------------	---

ILS or LOC RWY 36  
CORPUS CHRISTI INTL (CRP)

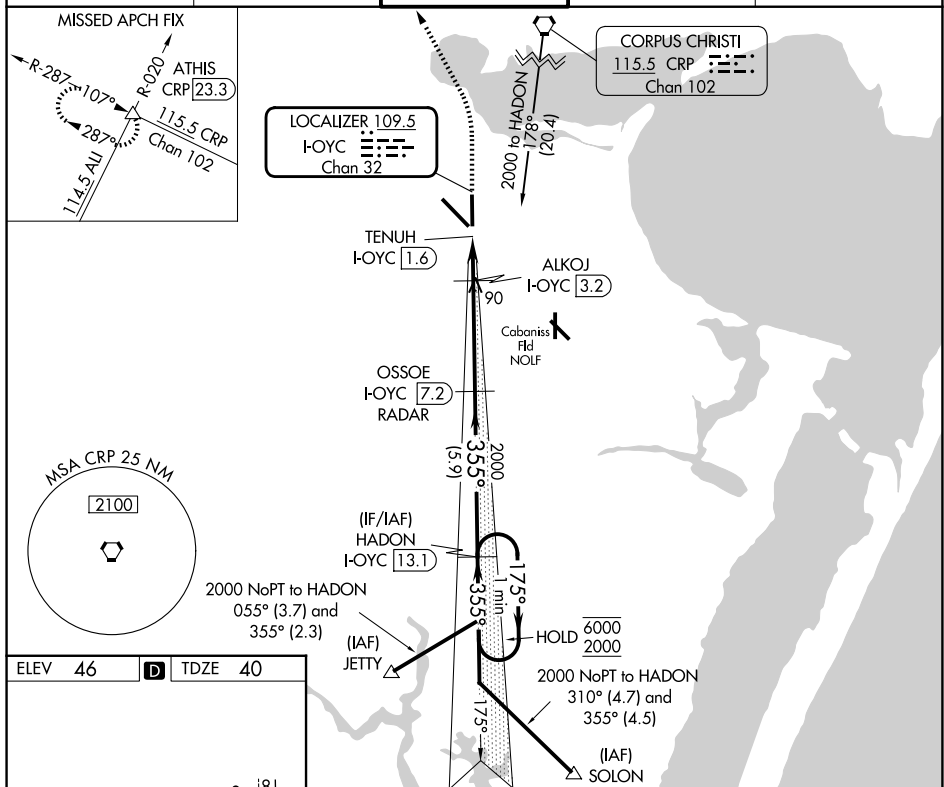
DME required.

**T** For inop ALS, increase S-ILS 36 Cat E visibility to RVR 4000 and S-LOC 36 Cat C/D/E visibility to RVR 4500.

MALSR

**MISSED APPROACH:** Climb to 700 then climbing left turn to 2000 on heading 338° and CRP VORTAC R-287 to ATHIS INT/CRP 23.3 DME and hold.

ATIS 126.8	CORPUS APP CON 120.9 348.725	CORPUS TOWER 119.4 257.8	GND CON 121.9 269.15	CLNC DEL 118.55
---------------	---------------------------------	-----------------------------	-------------------------	--------------------



7310 X 130

6080 X 150

TWR 36

355°

HIRL Rwy's 13-31 and 18-36

CATEGORY	A	B	C	D	E
S-ILS 36	240/24		200 (200-½)		
S-LOC 36	340/24		300 (300-½)		
CIRCLING	500-1 454 (500-1)	780-1 734 (800-1)	820-2¼ 774 (800-2¼)	820-2½ 774 (800-2½)	820-2¾ 774 (800-2¾)

SC-3, 07 AUG 2025 to 04 SEP 2025