

LOC/DME I-CRP <b><u>110.3</u></b> Chan <b>40</b>	APP CRS <b>132°</b>	Rwy Ldg <b>7510</b> TDZE <b>46</b> Apt Elev <b>46</b>
--	------------------------	---

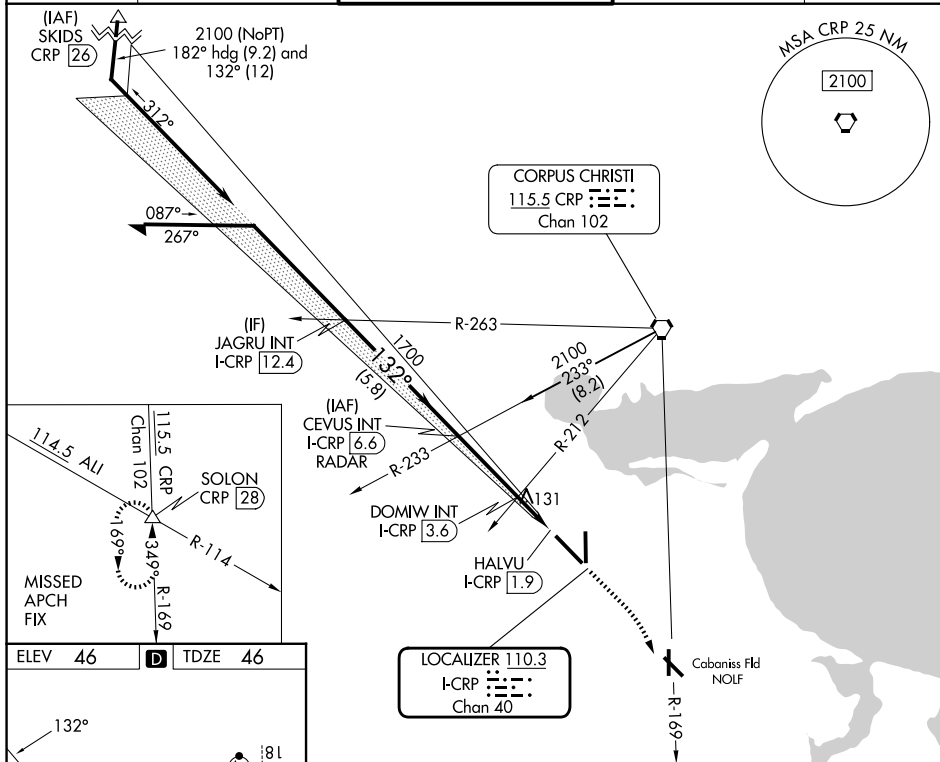
ILS or LOC RWY 13  
CORPUS CHRISTI INTL (CRP)

- T** Autopilot coupled approach NA below 260.  
**A** For inop ALS, increase S-ILS 13 Cat E visibility to RVR 4000 and S-LOC 13 Cats C, D, and E visibility to RVR 5500.  
 \*RVR 1800 authorized with use of FD or AP or HUD to DA.

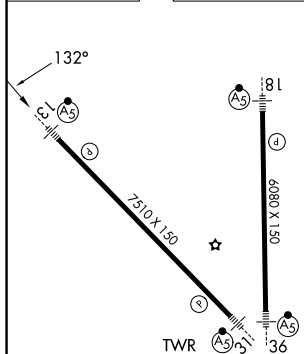


**MISSED APPROACH:** Climb to 500 then climbing right turn to 2000 on heading 132° and CRP VORTAC R-169 to SOLON INT/CRP VORTAC 28 DME and hold.

ATIS <b>126.8</b>	CORPUS APP CON <b>120.9 348.725</b>	CORPUS TOWER <b>119.4 257.8</b>	GND CON <b>121.9 269.15</b>	CLNC DEL <b>118.55</b>
----------------------	--	------------------------------------	--------------------------------	---------------------------



ELEV 46	<b>D</b>	TDZE 46
---------	----------	---------



HIRL Rwys 13-31 and 18-36

FAF to MAP 4.7 NM

Knots	60	90	120	150	180
Min:Sec	4:42	3:08	2:21	1:53	1:34

CORPUS CHRISTI, TEXAS

Amdt 28B 02NOV23

27°46'N-97°30'W

Diagram illustrating a 15 NM DME arc with various navigation aids and distance markers:

- CEVUS INT I-CRP RADAR** (6.6) at 1700.
- DOMTW INT I-CRP** (3.6) at 1700.
- I-CRP** (2.5) at 1700.
- HALVU I-CRP** (1.9) at 1700.
- GS 3.00° TCH 50** at 1700.
- 2100** at 1700.
- 312°** and **132°** bearings.
- 3 NM**, **1.1**, **0.6**, and **0.3** distance markers.
- 500** and **2000** altitude markers.
- hdg 132°** and **CRP R-169**.
- SOLON** (triangle symbol).

Use I-CRP DME when on the localizer course.

CATEGORY	A	B	C	D	E
S-ILS 13*	246/24 200 (200-½)				
S-LOC 13	400/24	354 (400-½)	400/30 354 (400-⅝)		
CIRCLING	500-1 454 (500-1)	780-1 734 (800-1)	820-2¼ 774 (800-2¼)	820-2½ 774 (800-2½)	820-2¾ 774 (800-2¾)

CORPUS CHRISTI INTL (CRP)  
ILS or LOC RWY 13