

FORT CAVAZOS, TEXAS

COPTER RNAV (GPS) RWY 34

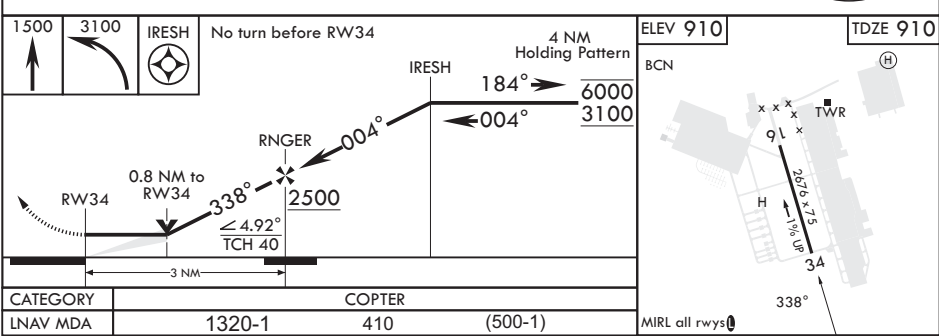
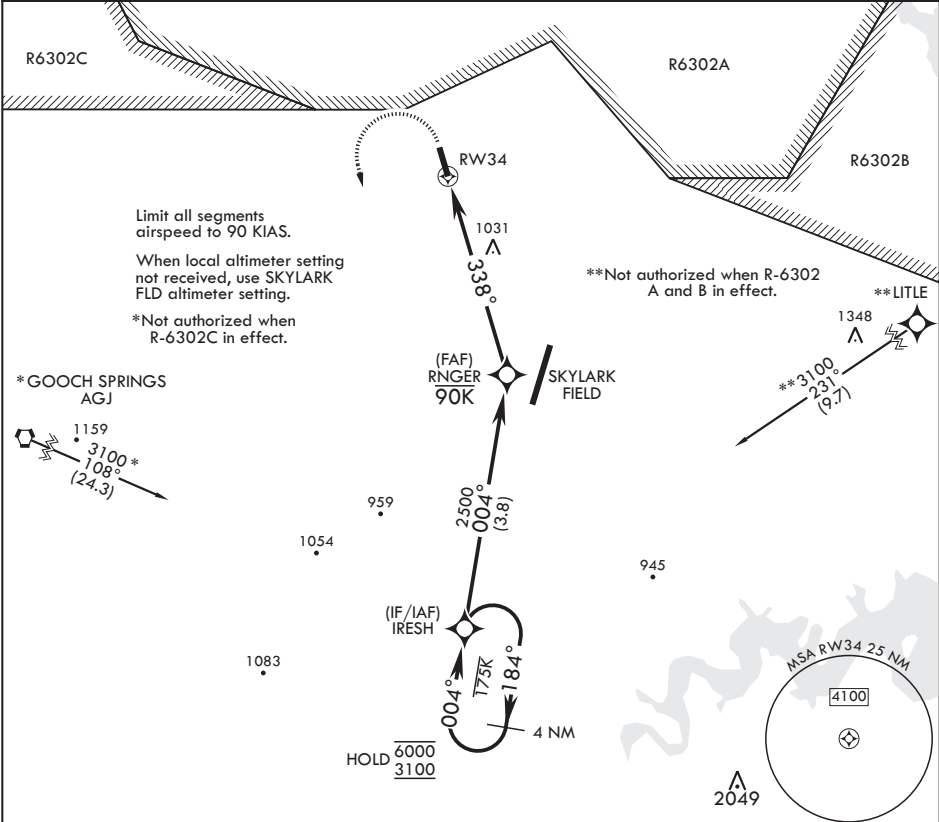
APCH CRS	Rwy Idg	2676
338°	TDZE	910
	Arpt Elev	910

-(USA)

YOAKUM DEFRENN AHP (KHLR)

RNP APCH – GPS	MISSED APPROACH: Climb to 1500 then climbing left turn to 3100 direct IRESH and hold.
RADAR required for missed approach.	
NA	

ATIS ★ 138.6	GRAY APP CON/DEP CON 120.075 323.15	TOWER ★ 119.65 269.45	GND CON 133.85 225.4	CLNC DEL 225.4
-----------------	--	--------------------------	-------------------------	-------------------



FORT CAVAZOS, TEXAS

31°08'N - 97°43'W

YOAKUM DEFRENN AHP (KHLR)

Amdt 1 05OCT23

COPTER RNAV (GPS) RWY 34

SC-3, 07 AUG 2025 to 04 SEP 2025

SC-3, 07 AUG 2025 to 04 SEP 2025