

COPTER NDB RWY 34

LOM IL <b>278</b>	APCH CRS <b>353°</b>	Rwy Idg TDZE Arpt Elev <b>2676</b> <b>910</b> <b>910</b>
----------------------	-------------------------	---

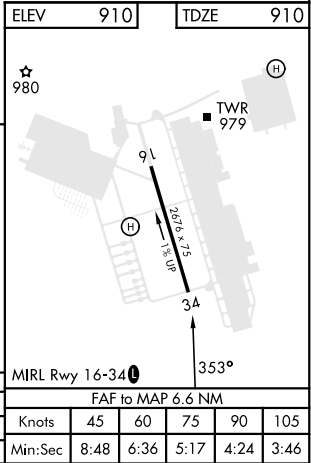
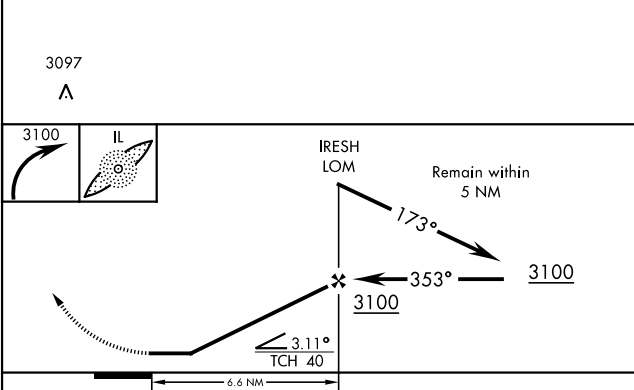
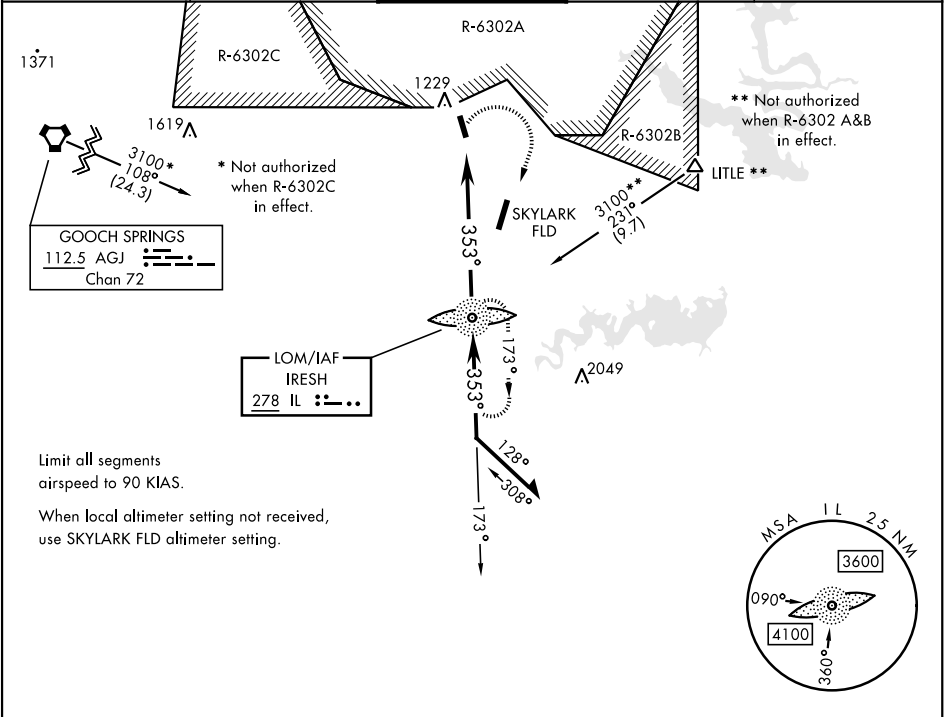
[USA]

YOAKUM DEFRENN AHP (KHLR)

RADAR required for missed approach.

NA MISSED APPROACH: Climbing right turn to 3100 direct IL LOM and hold.

ATIS★ <b>138.6</b>	GRAY APP CON <b>120.075 323.15</b>	TOWER★ <b>119.650 269.45</b>	GND CON <b>133.85 225.4</b>	CLNC DEL <b>225.4</b>
-----------------------	---------------------------------------	---------------------------------	--------------------------------	--------------------------



CATEGORY	COPTER			FAF to MAP 6.6 NM					
S-34	1400-1	490	(500-1)	Knots	45	60	75	90	105
CIRCLING	1540-1	630	(700-1)	Min:Sec	8:48	6:36	5:17	4:24	3:46

COPTER NDB RWY 34

SC-3, 07 AUG 2025 to 04 SEP 2025

SC-3, 07 AUG 2025 to 04 SEP 2025