

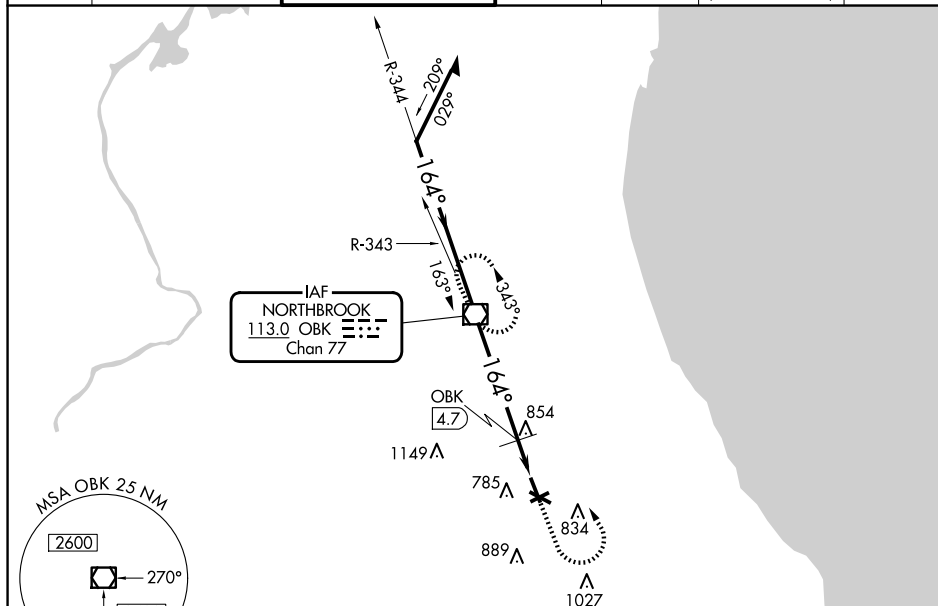
VOR/DME OBK 113.0 Chan 77	APP CRS 164°	Rwy Idg TDZE Apt Elev	5001 643 647
---	------------------------	-----------------------------	---

VOR RWY 16
CHICAGO EXEC (PWK)

- A** Rwy 16 helicopter visibility reduction below $\frac{3}{4}$ SM NA. When local altimeter setting not received, use Chicago-O'Hare Intl altimeter setting: increase all MDAs 40 feet and visibility DME minimums S-16 Cats C and D $\frac{1}{4}$ SM. Circling Rwy 6, 12, 24, 30 NA at night.

MISSED APPROACH: Climb to 1400, then climbing left turn to 2700 direct OBK VOR/DME and hold.

ATIS 124.2	CHICAGO APP CON 120.55 306.925	EXECUTIVE TOWER ★ 119.9 (CTAF) 0	GND CON 121.7	CLNC DEL 124.7	CLNC DEL 124.7 (When twr closed)	UNICOM 122.95
----------------------	--	--	-------------------------	--------------------------	---	-------------------------



EC-3, 07 AUG 2025 to 04 SEP 2025

[illegible]