

APP CRS  
300°

Rwy Idg  
TDZE  
Apt Elev

3725  
644  
647

RNAV (GPS) RWY 30  
CHICAGO EXEC (PWK)

RNP APCH - GPS.

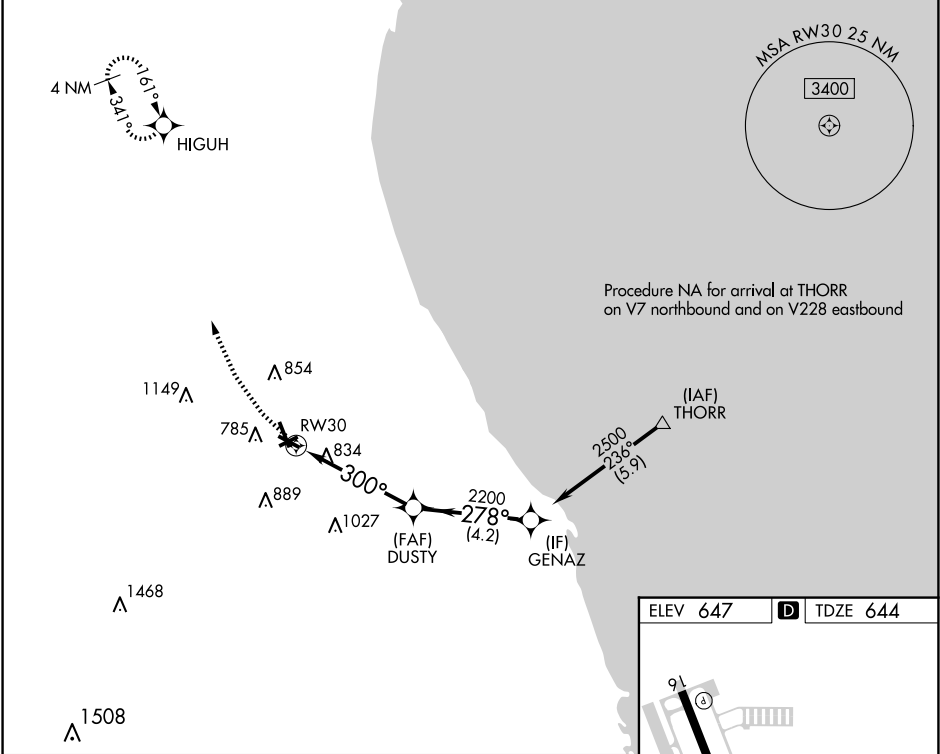
⚠

⚠

Circling Rwy 6, 12, 24, 30 NA at night.  
Rwy 30 Straight-in procedure NA at night.  
Rwy 30 helicopter visibility reduction below 1 SM NA.

MISSED APPROACH: Climbing right turn to 2500 direct HIGUH and hold.

ATIS 124.2	CHICAGO APP CON 120.55 306.925	EXECUTIVE TOWER ★ 119.9 (CTAF) 0	GND CON 121.7	CLNC DEL 124.7	CLNC DEL 124.7 (When twr closed)	UNICOM 122.95
---------------	-----------------------------------	-------------------------------------	------------------	-------------------	--	------------------



2500 HIGUH

GENAZ THORR

DUSTY

300° 278° 236° 2500

3.00° TCH 42

RW30

4.8 NM 4.2 NM 5.9 NM

CATEGORY	A	B	C	D
LNVA MDA	1120-1	476 (500-1)	1120-1 3/8	476 (500-1 3/8)
CIRCLING	1140-1 493 (500-1)	1160-1 513 (600-1)	1200-1 1/2 553 (600-1 1/2)	1460-2 3/4 813 (900-2 3/4)

ELEV 647 TDZE 644

HIRL Rwy 6-24 and 16-34  
MIRL Rwy 12-30  
REIL Rws 12 and 30  
REIL Rws 16 and 34  
RLS Rwy 16