

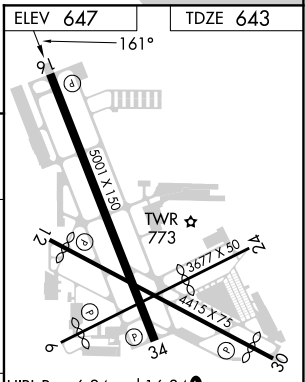
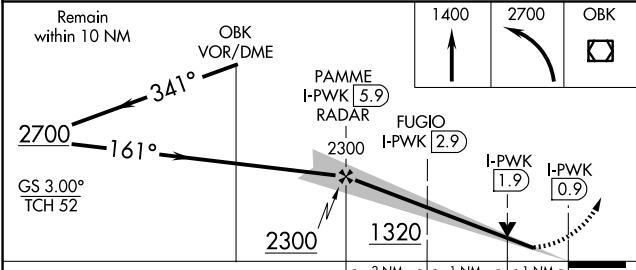
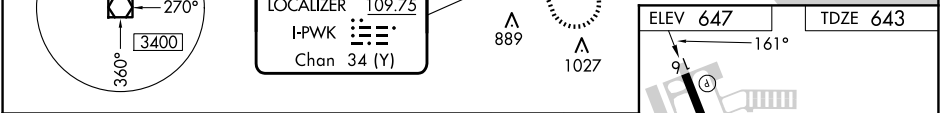
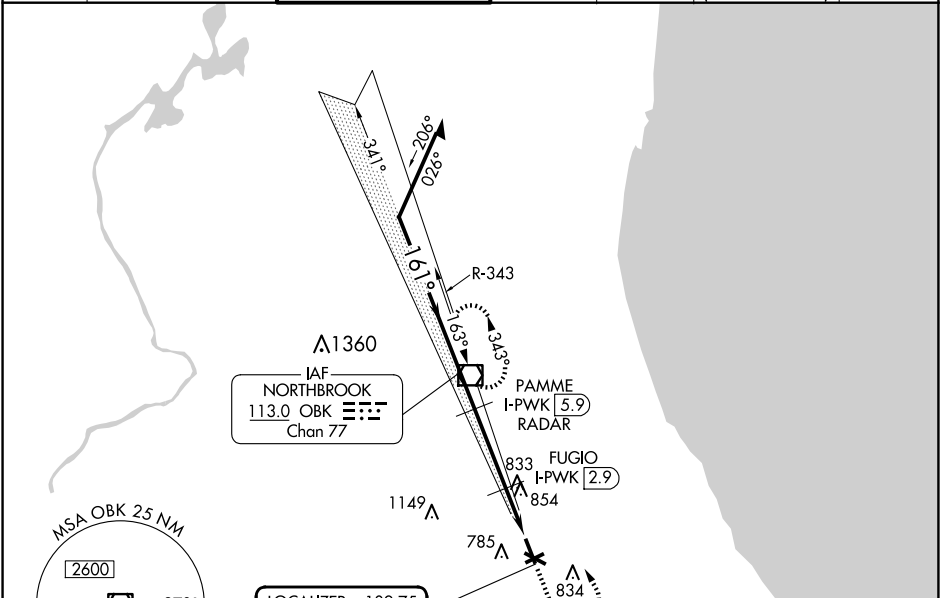
LOC/DME I-PWK	APP CRS	Rwy Idg	5001
<b>109.75</b>	<b>161°</b>	TDZE	<b>643</b>
Chan <b>34</b> (Y)		Apt Elev	<b>647</b>

ILS or LOC RWY 16

CHICAGO EXEC (PWK)

DME required.	MISSED APPROACH: Climb to 1400 then climbing left turn to 2700 direct OBK VOR/DME and hold, continue climb-in-hold to 2700.
Circling Rwy 6, 12, 24, 30 NA at night. Rwy 16 helicopter visibility reduction below ¾ SM NA.	

ATIS	CHICAGO APP CON	EXECUTIVE TOWER ★	GND CON	CLNC DEL	CLNC DEL	UNICOM
<b>124.2</b>	<b>120.55 306.925</b>	<b>119.9</b> (CTAF) <b>0</b>	<b>121.7</b>	<b>124.7</b>	<b>124.7</b> (When twr closed)	<b>122.95</b>



CATEGORY	A	B	C	D
S-ILS 16		927-7/8	284 (300-7/8)	
S-LOC 16		1020-1	377 (400-1)	
CIRCLING	1140-1 493 (500-1)	1160-1 513 (600-1)	1200-1½ 553 (600-2)	1460-2¾ 813 (900-2¾)

HIRL Rwy 6-24 and 16-34	1
MIRL Rwy 12-30	1
REIL Rwy 12 and 30	
REIL Rwy 16 and 34	1
RLS Rwy 16	1
FAF to MAP 5 NM	
Knots	60 90 120 150 180
Min:Sec	5:00 3:20 2:30 2:00 1:40

EC-3, 07 AUG 2025 to 04 SEP 2025

EC-3, 07 AUG 2025 to 04 SEP 2025