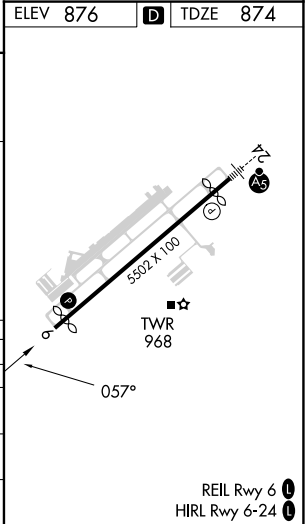
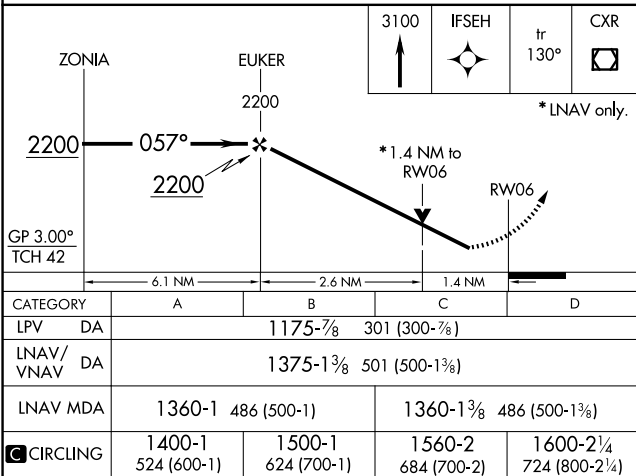
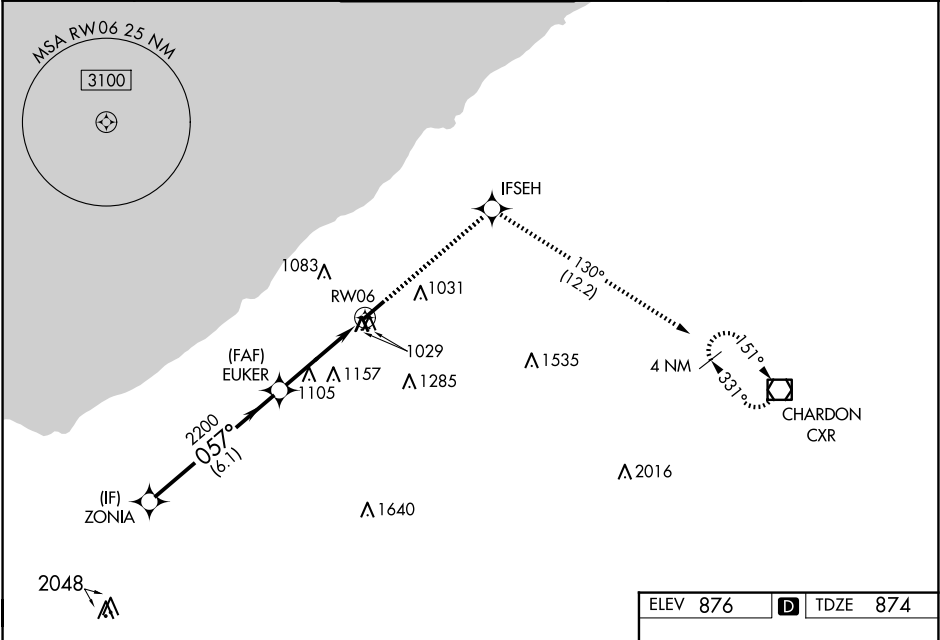


WAAS CH 70628 W06A	APP CRS 057°	Rwy Idg TDZE 874 Apt Elev 876
--	------------------------	---

RNAV (GPS) RWY 6

CUYAHOGA COUNTY (CGT)

RNP APCH.				MISSED APPROACH: Climb to 3100 direct IFSEH and on track 130° to CXR VOR/DME and hold.	
D-ATIS 119.95	CLEVELAND APP CON 125.35 346.325	COUNTY TOWER★ 118.5 (CTAF) 0	GND CON 121.85	CLNC DEL 121.85 (when tower closed)	



EC-2, 07 AUG 2025 to 04 SEP 2025

EC-2, 07 AUG 2025 to 04 SEP 2025