

WAAS CH <b>42528</b> <b>W24A</b>	APP CRS <b>238°</b>	Rwy Idg TDZE <b>873</b> Apt Elev <b>876</b>
----------------------------------------	------------------------	---------------------------------------------------

RNAV (GPS) RWY 24

CUYAHOGA COUNTY (CGT)

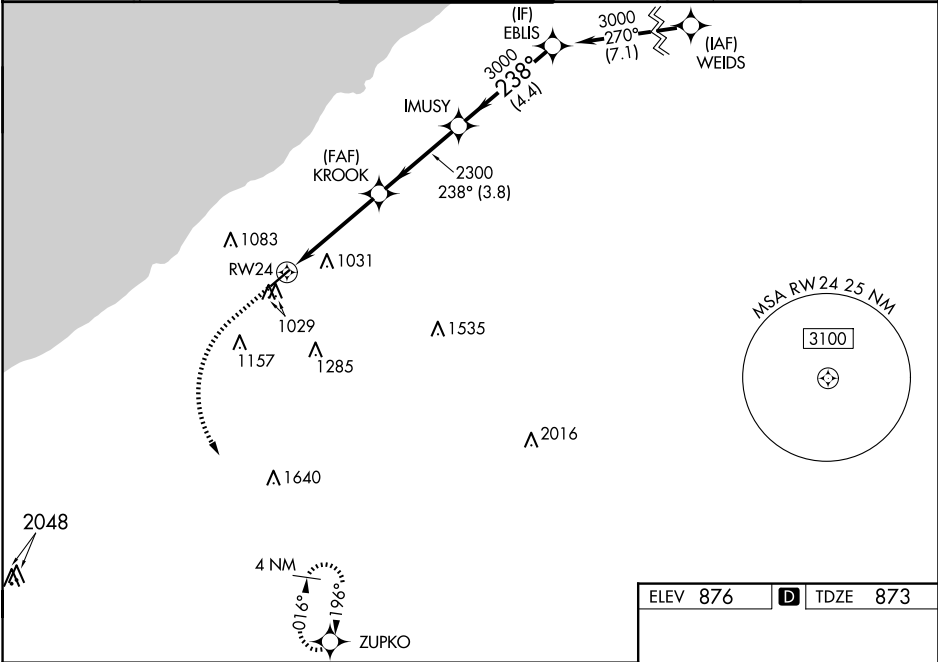
RNP APCH.






For uncompensated Baro-VNAV systems, LNAV/VNAV NA below -16°C or above 38°C . For inop ALS increase LNAV/VNAV visibility all Cats to 7/8 SM, LNAV Cat C, D to 1 1/8 SM.

MALSR

MISSED APPROACH:  
Climb to 2500 then climbing left turn to 3000 direct ZUPKO and hold.

D-ATIS <b>119.95</b>	CLEVELAND APP CON <b>125.35 346.325</b>	COUNTY TOWER★ <b>118.5 (CTAF)</b> <b>0</b>	GND CON <b>121.85</b>	CLNC DEL <b>121.85</b> (when tower closed)
-------------------------	--------------------------------------------	-----------------------------------------------	--------------------------	--------------------------------------------------



2500	3000	ZUPKO				
						
*LNAV only			KROOK	IMUSY	EBUS	
*1.1 NM to RW24			2300	238°	3000	
			2300	3000	GP 3.00°	TCH 44
1.1 NM			3.2 NM	3.8 NM	4.4 NM	
CATEGORY		A	B	C	D	
LPV	DA	1073-½ 200 (200-½)				
LNAV/ VNAV	DA	1178-½ 305 (400-½)				
LNAV	MDA	1280-½ 407 (500-½)		1280-¾ 407 (500-¾)		
 CIRCLING	1400-1 524 (600-1)		1500-1 624 (700-1)		1560-2 684 (700-1)	
	524 (600-1)		624 (700-1)		744 (800-2½)	

