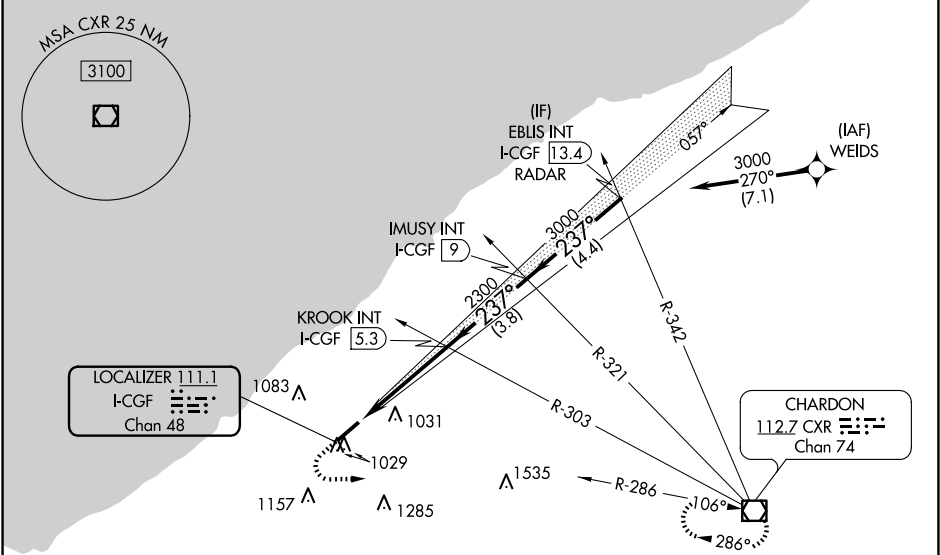


LOC/DME I-CGF <b>111.1</b> Chan <b>48</b>	APP CRS <b>237°</b>	Rwy Idg TDZE <b>873</b> Apt Elev <b>876</b>	<b>ILS or LOC RWY 24</b> CUYAHOGA COUNTY (CGF)
---	------------------------	---	---

RNP APCH-GPS. From WEIDS. RNAV 1-GPS or RADAR required for procedure entry. Aircraft not GPS equipped - RADAR required for procedure entry.	MALSR 	MISSED APPROACH: Climb to 1600 then climbing left turn to 3100 on CXR VOR/DME R-286 to CXR VOR/DME and hold.
Autopilot coupled approach NA below 1513. Rwy 24 helicopter visibility reduction below ¾ SM NA. For inop ALS increase S-LOC Cats C/D to 1 SM.		

D-ATIS <b>119.95</b>	CLEVELAND APP CON <b>125.35 346.325</b>	COUNTY TOWER★ <b>118.5 (CTAF)</b>	GND CON <b>121.85</b>	CINC DEL <b>121.85</b> (when tower closed)
-------------------------	--	--------------------------------------	--------------------------	--



ELEV 876

TDZE 873

1600

3100

CXR R-286

CXR

KROOK INT I-CGF 5.3

IMUSY INT I-CGF 9

EBLIS INT I-CGF 13.4 RADAR

I-CGF 0.9

I-CGF 1.9

I-CGF 5.3

I-CGF 9

I-CGF 13.4

1 NM

3.3 NM

3.8 NM

4.4 NM

GS 3.00°

TCH 44

CATEGORY	A	B	C	D
S-ILS 24	1073-½	200 (200-½)		
S-LOC 24	1240-½	367 (400-½)	1240-⅝	367 (400-⅝)
CIRCLING	1400-1 524 (600-1)	1500-1 624 (700-1)	1560-2 684 (700-2)	1620-2½ 744 (800-2½)

EC-2, 07 AUG 2025 to 04 SEP 2025

EC-2, 07 AUG 2025 to 04 SEP 2025