

VOR/DME STW	APP CRS	Rwy Idg	1981
109.6	094°	TDZE	N/A
Chan 33		Apt Elev	583

VOR-A

AEROFLEX/ANDOVER (12N)

▼

▲

When local altimeter setting not received, use Caldwell altimeter setting and increase MDA 120 feet. Procedure NA at night.

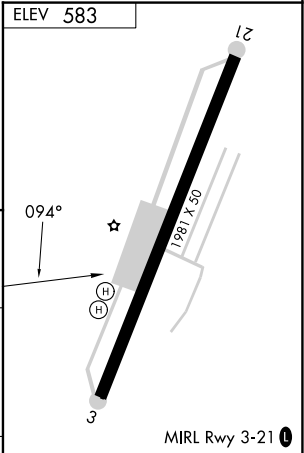
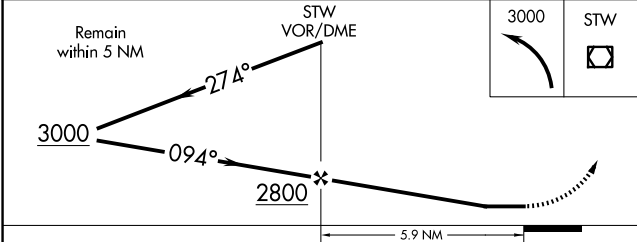
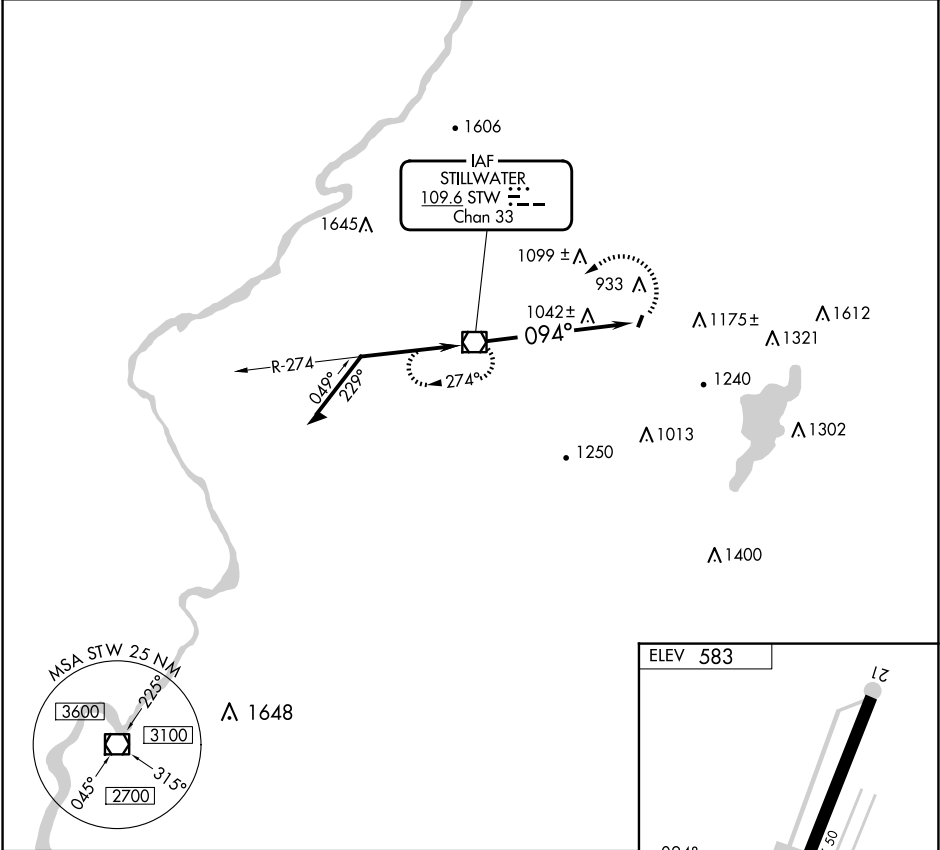
MISSED APPROACH: Climbing left turn to 3000 direct STW VOR/DME and hold.


NEWARK APP CON

127.6 379.9

UNICOM

122.8 (CTAF) 0



CATEGORY	A	B	C	D	FAF to MAP 5.9 NM					
 CIRCLING	1560-1¼ 977 (1000-1¼)	NA			Knots	60	90	120	150	180
	Min:Sec				5:54	3:56	2:57	2:22	1:58	