

VOR FFT	APP CRS	Rwy Idg	5506
109.4	251°	TDZE	790
		Apt Elev	812

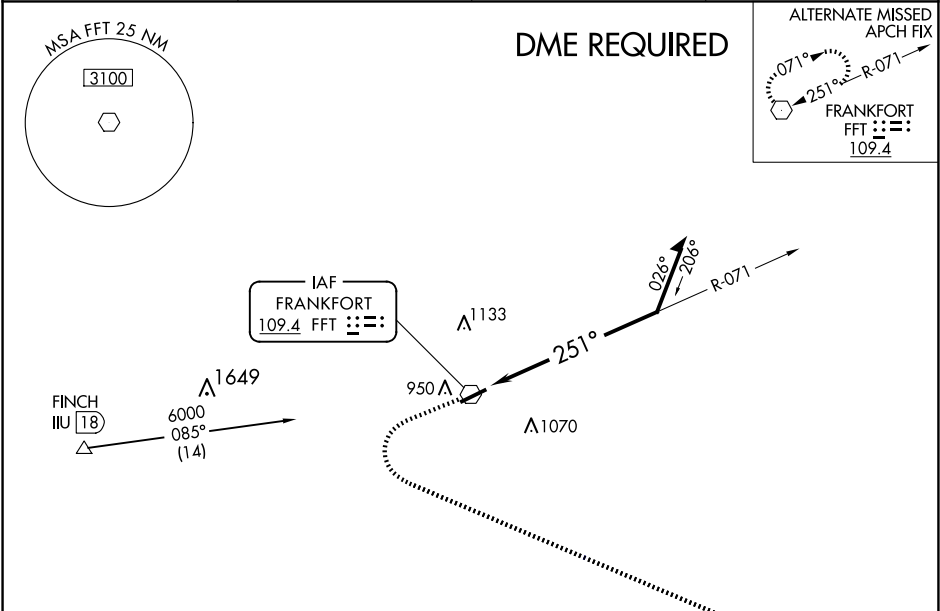
VOR RWY 25
CAPITAL CITY (F'TT)

⚠

Rwy 25 helicopter visibility reduction below ¾ SM NA. When local altimeter setting not received, use Lexington altimeter setting and increase all MDA 80 feet, increase S-25 Cat C/D visibility ½ mile, and increase Circling Cat C ½ mile, and Cat D ¼ mile.

MISSED APPROACH:
Climb to 3100 then left turn direct HYK VOR/DME and hold.

ASOS 119.275	LEXINGTON APP CON 120.75 298.9	CLNC DEL 118.65	UNICOM 122.8 (CTAF) 0
-----------------	-----------------------------------	--------------------	---------------------------------



ELEV 812

TDZE 790

MISSED APCH FIX

124°

304° R-124

LEXINGTON
HYK **112.6**
Chan 73

3100

HYK

FFT
VOR

Remain within 10 NM

071°

2700

251°

MIRL Rwy 7-25 **0**

REIL Rwys 7 and 25 **0**

CATEGORY	A	B	C	D
S-25	1440-1	650 (700-1)	1440-1½	650 (700-1½)
C CIRCLING	1440-1	628 (700-1)	1440-1½	1440-2 628 (700-2)

SE-1, 07 AUG 2025 to 04 SEP 2025

SE-1, 07 AUG 2025 to 04 SEP 2025