

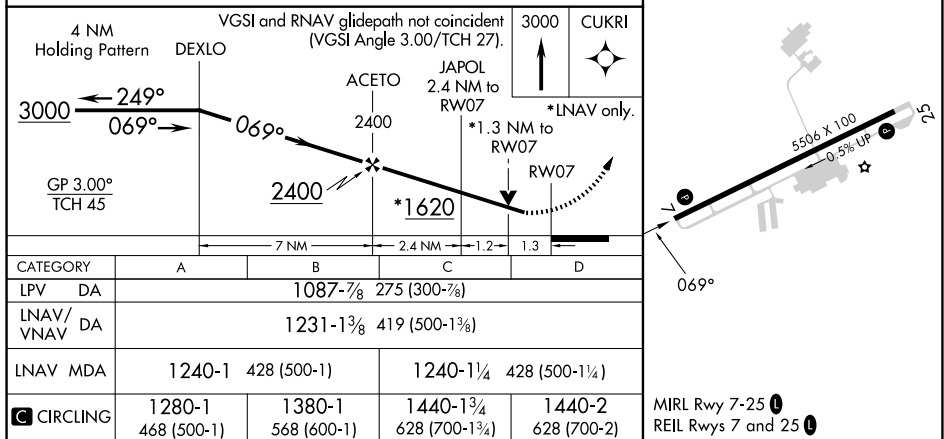
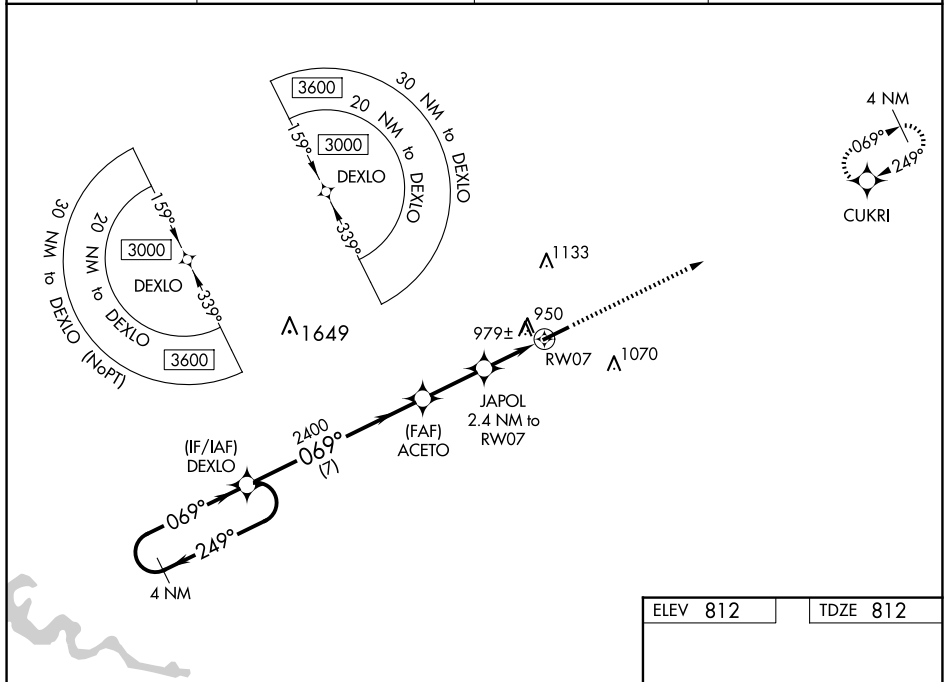
WAAS CH 77831 W07A	APP CRS 069°	Rwy Idg 5506 TDZE 812 Apt Elev 812
----------------------------------------	------------------------	---------------------------------------------------------------

RNAV (GPS) RWY 7
CAPITAL CITY (FFT)

▼ For uncompensated Baro-VNAV systems, LNAV/VNAV NA below -16°C (4°F) or above 54°C (130°F). DME/DME RNP-0.3 NA. When local altimeter setting not received, use Lexington altimeter setting and increase LPV DA to 1149 feet and LNAV/VNAV DA to 1293 feet and all visibilities ¼ mile; increase all MDAs 80 feet, LNAV visibility Cats C and D ½ mile, and Circling visibility Cats C and D ¼ mile. VDP and Baro-VNAV NA with Lexington altimeter setting. Helicopter visibility reduction below ¾ SM NA.

MISSED APPROACH:
Climb to 3000 direct
CUKRI and hold.

ASOS 119.275	LEXINGTON APP CON 120.75 298.9	CLNC DEL 118.65	UNICOM 122.8 (CTAF) 0
------------------------	------------------------------------------	---------------------------	---------------------------------



SE-1, 07 AUG 2025 to 04 SEP 2025