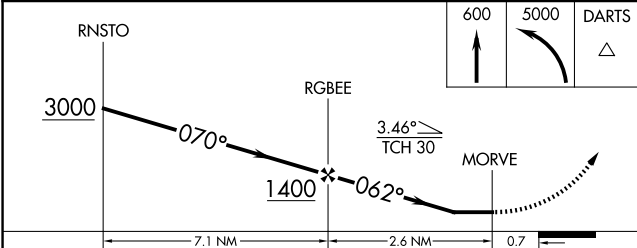
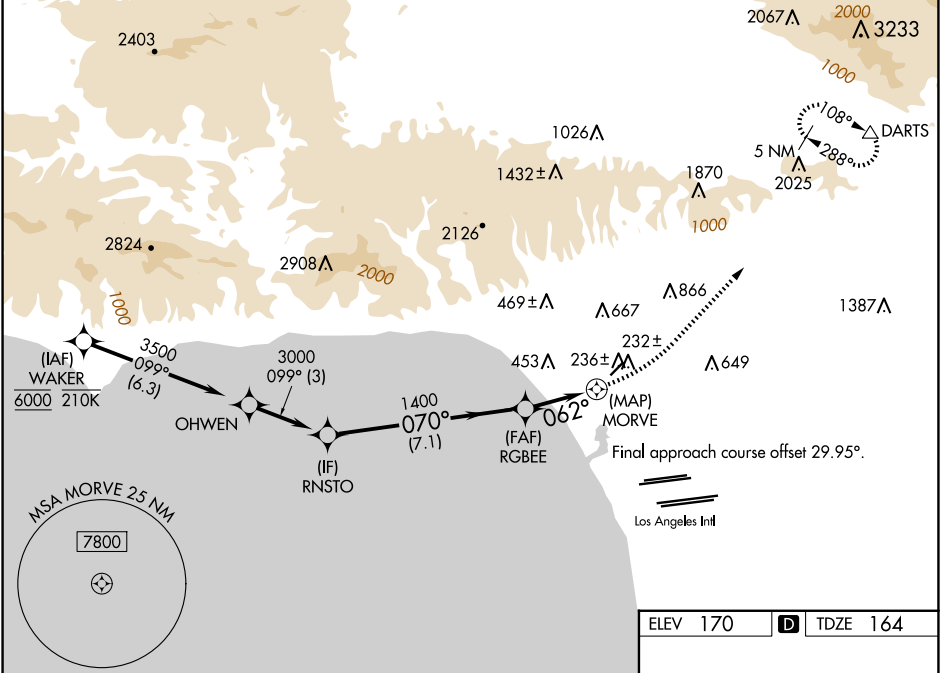


WAAS CH 77839 W03B	APP CRS 062°	Rwy Idg TDZE 164 Apt Elev 170	3500
--	------------------------	---	-------------

RNAV (GPS) Z RWY 3
SANTA MONICA MUNI (SMO)

RNP APCH - GPS.	MISSED APPROACH: Climb to 600 then climbing left turn to 5000 direct DARTS and hold, do not exceed 175K when continuing climb-in-hold to 5000. *Missed approach requires minimum climb of 290 feet per NM to 3800.
<div><div></div><div>Rwy 3 helicopter visibility reduction below ¾ SM NA.</div></div>	

ATIS 119.15	SOCAL APP CON 135.05 317.5	SANTA MONICA TOWER * 120.1 (CTAF) 257.8	GND CON 121.9	UNICOM 122.95
-----------------------	--------------------------------------	---	-------------------------	-------------------------



CATEGORY	A	B	C	D
LP MDA*	460-1	296 (300-1)	NA	NA
LNAV MDA*	500-1	336 (400-1)	NA	NA
LP MDA	1240-1¼ 1076 (1100-1¼)	1240-1½ 1076 (1100-1½)	NA	NA
LNAV MDA	1360-1¼ 1196 (1200-1¼)	1360-1½ 1196 (1200-1½)	NA	NA

ELEV 170

TDZE 164

TWR 246

2350 X 150

1.23 UP

062°

MIRL Rwy 3-21

REIL Rwy 21