

SANTA MONICA, CALIFORNIA

AL-5023 (FAA)

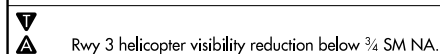
25051

WAAS CH 50339 W03A	APP CRS 051°	Rwy Idg 3500 TDZE 164 Apt Elev 170
--	------------------------	---

RNAV (GPS) Y RWY 3

SANTA MONICA MUNI (SMO)

RNP APCH - GPS.

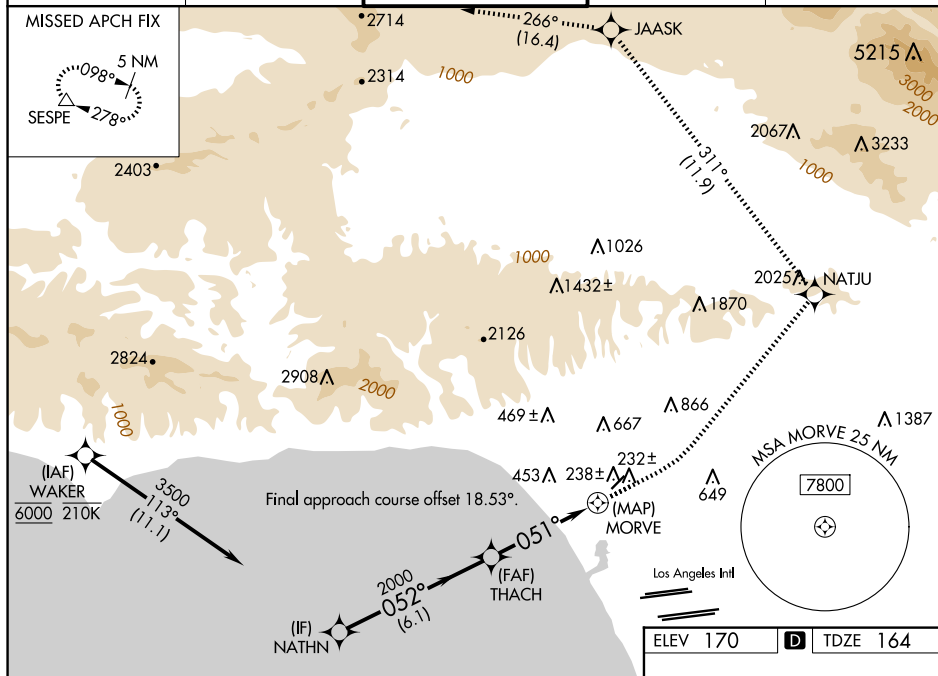
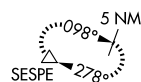


MISSED APPROACH: Climb to 600 then climbing left turn to 5500 direct NATJU and track 311° to JAASK and track 266° to SESPE and hold.

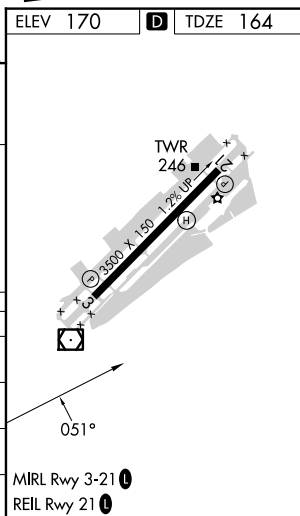
*Missed approach requires minimum climb of 280 feet per NM to 2300.

ATIS 119.15	SOCAL APP CON 135.05 317.5	SANTA MONICA TOWER ★ 120.1 (CTAF) 0 257.8	GND CON 121.9	UNICOM 122.95
----------------	-------------------------------	--	------------------	------------------

MISSED APCH FIX



NATHN		600 ↑		5500 ↖		NATJU ✦		tr 311°		JAASK ✦		tr 266°		SESPE △	
3500		052°		THACH		3.46° TCH 30		2000		051°		MORVE			
6.1 NM				4.3 NM				0.7							
CATEGORY	A	B	C	D											
LP MDA*	480-1 316 (400-1)														
INAV MDA*	500-1 336 (400-1)														
LP MDA	820-1 656 (700-1)					820-1½ 656 (700-1½)									
INAV MDA	1000-1 836 (900-1)					1000-1¼ 836 (900-1¼)					1000-2½ 836 (900-2½)				



SANTA MONICA, CALIFORNIA
Amdt 2 20FEB25

34°01'N-118°27'W

SANTA MONICA MUNI (SMO)
RNAV (GPS) Y RWY 3

SW-3, 07 AUG 2025 to 04 SEP 2025

SW-3, 07 AUG 2025 to 04 SEP 2025