

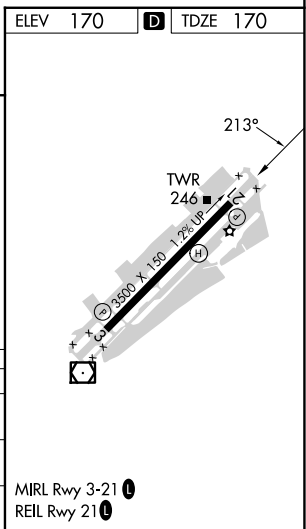
RNAV (GPS) RWY 21  
SANTA MONICA MUNI (SMO)

**MISSED APPROACH:** Climb to 600 then climbing right turn to 5000 direct CAPOB and on track 283° to SADDE and hold, continue climb-in-hold to 5000.

Procedure NA for arrivals at DARTS on V186-597 eastbound,  
V459-597 northwest bound and on V459 southeast bound.

2403  
2314  
2067  
3233  
4000±  
2828  
2038  
1000  
3000  
2000  
1026  
1432±  
2126  
1870  
2025  
3000  
219  
14.61  
(IF) DARTS  
213  
(FAF) MOVE  
866  
667  
232±  
RW21  
649  
453  
469±  
2908  
1000  
2000  
2824  
5 NM  
148°  
328°  
SADDE  
283°  
(9.5)  
CAPOB  
1387  
MSA RW21 25 NM  
7800

600 ↑	5000 ↗	CAPOB ✦	fr 283° △	VGS1 and RNAV glidepath not coincident (VGS1 Angle 3.50/TCH 45).			
*LNAV only				MOVVE 3000	DARTS 4200		
MIPTP 3.3 NM to RW21 *2.4 NM to RW21 RW21 213° 1440* 219° 3000 GP 3.50° TCH 53							
← 2.4 NM		0.9 NM		4.2 NM		4.6 NM	
CATEGORY A		B		C		D	
LPV	DA	440-1 270 (300-1)					
LNAV/ VNAV	DA	685-1 <sup>3</sup> / <sub>8</sub> 515 (600-1 <sup>3</sup> / <sub>8</sub> )					
LNAV	MDA	1120-1 <sup>1</sup> / <sub>4</sub> 950 (1000-1 <sup>1</sup> / <sub>4</sub> )			1120-2 <sup>1</sup> / <sub>2</sub> 950 (1000-2 <sup>1</sup> / <sub>2</sub> )		



SW-3, 07 AUG 2025 to 04 SEP 2025

SW-3, 07 AUG 2025 to 04 SEP 2025