

WAAS CH 77617 W09A	APP CRS 090°	Rwy Idg TDZE 96 Apt Elev 112
--	------------------------	--

RNAV (GPS) RWY 9

ESLR RGNL (E/SF')

RNP APCH-GPS.

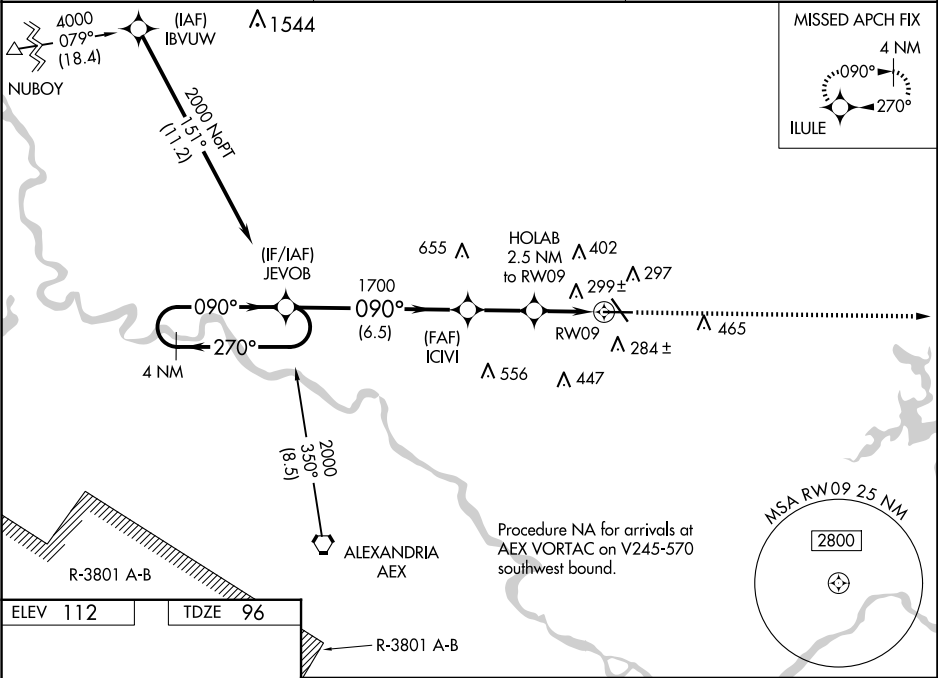
▼

⚠

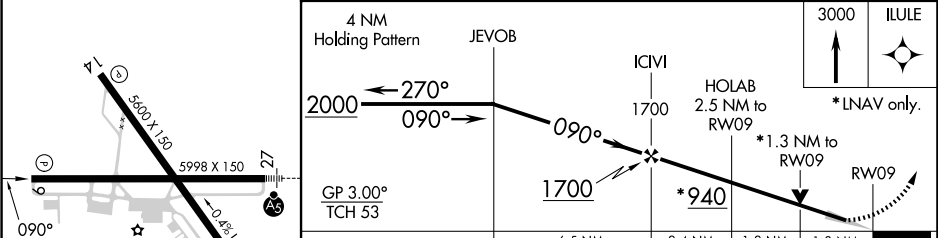
Circling Rwy 14, 32 NA at night. Baro-VNAV and VDP NA when using Alexandria Intl altimeter setting. For uncompensated Baro-VNAV systems, LNAV/VNAV NA below -6°C or above 54°C. When local altimeter setting not received, use Alexandria Intl altimeter setting: increase LPV DA to 331 feet; increase LNAV/VNAV DA to 644 feet and all visibility ¼ SM; increase all MDAs 40 feet and Circling visibility Cat D ¼.

MISSED APPROACH: Climb to 3000 direct ILULE and hold.

ESF ASOS 119.425	POLK APP CON 125.4 254.8	UNICOM 122.8 (CTAF) 0
----------------------------	------------------------------------	--



ELEV 112	TDZE 96
-----------------	----------------



CATEGORY	A	B	C	D
LPV DA		296-3¼	200 (200-¾)	
LNAV/VNAV DA		609-1¾	513 (500-1¾)	
LNAV MDA	560-1	464 (500-1)	560-1¾	464 (500-1¾)
CIRCLING	600-1	488 (500-1)	740-1¾ 628 (700-1¾)	760-2 648 (700-2)