

WAAS CH 61103 W27A	APP CRS 270°	Rwy Idg TDZE 92 Apt Elev 112
--	------------------------	--

RNAV (GPS) RWY 27

ESLER RGNL (E/SF')

RNP APCH-GPS.

⚠

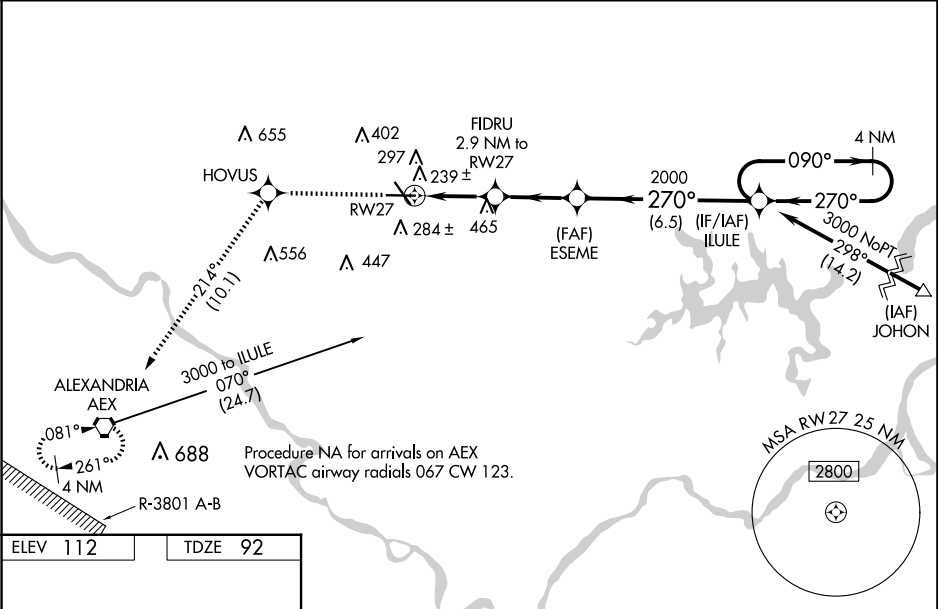
Circling Rwy 14, 32 NA at night. Baro-VNAV and VDP NA when using Alexandria Intl altimeter setting. For uncompensated Baro-VNAV systems, LNAV/VNAV NA below -6°C or above 54°C. When local altimeter setting not received, use Alexandria Intl altimeter setting: increase LPV DA to 327 feet; increase LNAV/VNAV DA to 457 feet and all visibility ½ SM; increase all MDAs 40 feet and LNAV visibility Cat C/D ½ SM and Circling visibility Cat D ¼ SM. For inop MALSR increase LNAV/VNAV all Cats visibility to 1 mile and LNAV Cat C/D visibility to 1½. For inop MALSR, when using Alexandria Intl altimeter setting, increase LNAV/VNAV all Cats visibility to 1 SM.

MALSR

MISSED APPROACH:

Climb to 3000 direct HOVUS and on track 214° to AEX VORTAC and hold.

ESF ASOS 119.425	POLK APP CON 125.4 254.8	UNICOM 122.8 (CTAF) 0
----------------------------	------------------------------------	--



ELEV 112

TDZE 92

REIL Rws 9, 14 and 32

MIRL Rwy 14-32

HIRL Rwy 9-27

3000	HOVUS	tr 214°	AEX	
*LNAV only.				
RW27				
FIDRU 2.9 NM to RW27				
*1.1 NM to RW27				
ESEME 2000				
ILULE 3000				
4 NM Holding Pattern				
GP 3.00° TCH 59				
1.1 NM 1.8 NM 2.9 NM 6.5 NM				
CATEGORY	A	B	C	D
LPV DA	292-½		200 (200-½)	
LNAV/VNAV DA	422-½		330 (400-½)	
LNAV MDA	500-½	408 (400-½)	500-¾	408 (400-¾)
CIRCLING	600-1	488 (500-1)	740-1¾ 628 (700-1¾)	760-2 648 (700-2)

SC-4, 07 AUG 2025 to 04 SEP 2025

SC-4, 07 AUG 2025 to 04 SEP 2025