

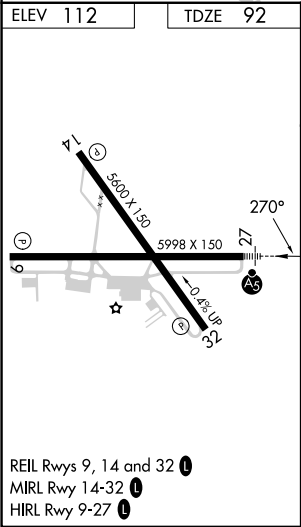
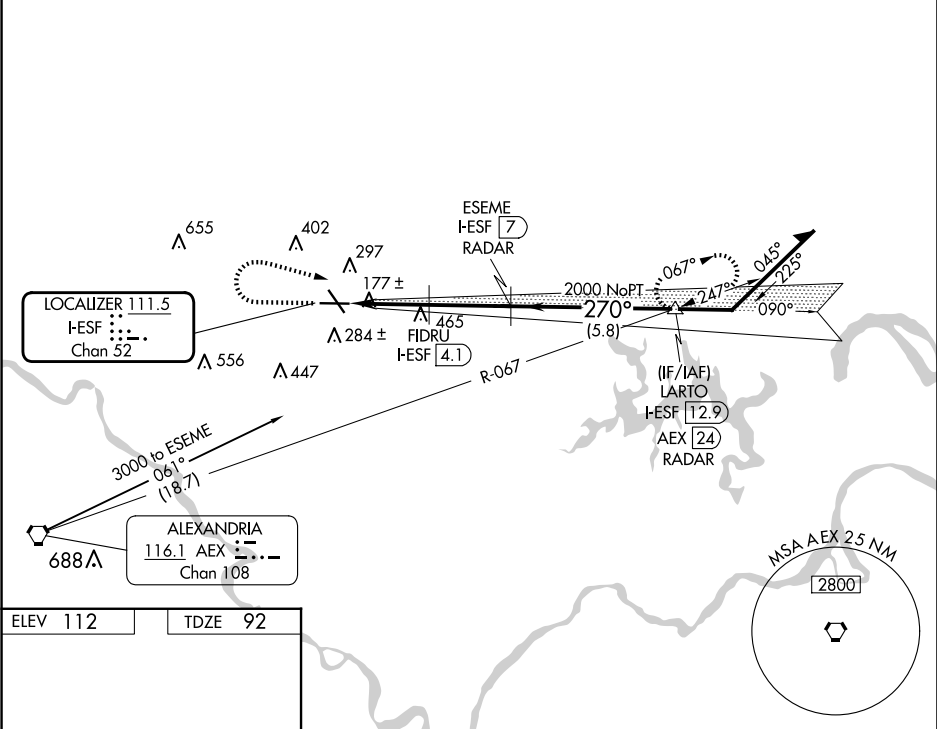
LOC I-ESF 111.5 Chan 52	APP CRS 270°	Rwy Idg 5998 TDZE 92 Apt Elev 112
---	------------------------	--

ILS or LOC/DME RWY 27

ESLR RGNL (E/SF')

RADAR or DME required.	MALSR	MISSED APPROACH: Climb to 1500 then climbing right turn to 3000 on heading 120° and on AEX VORTAC R-067 to LARTO/AEX 24.1 DME/RADAR and hold.
<div><div>⚠</div><div>NA</div></div> <div>Circling Rwy 14, 32 NA at night. VDP NA with Alexandria Intl altimeter setting. When local altimeter not received, use Alexandria Intl altimeter setting and increase DA to 327 feet; increase all MDA to 40 feet and Circling visibility Cat D ¼ SM. For inop MALSR, increase S-LOC 27 Cat C/D visibility to 1 SM.</div>		

ESF ASOS 119.425	POLK APP CON 125.4 254.8	UNICOM 122.8 (CTAF) 0
----------------------------	------------------------------------	--



1500	3000	AEX R-067	LARTO AEX 24.1 RADAR	ESEME I-ESF 7 RADAR	Remain within 10 NM
*LOC only.					
CATEGORY	A	B	C	D	
S-ILS 27	292-½ 200 (200-½)				
S-LOC 27	440-½ 348 (400-½)		440-⅝ 348 (400-⅝)		
CIRCLING	600-1 488 (500-1)		740-1¾ 628 (700-1¾)		760-2 648 (700-2)