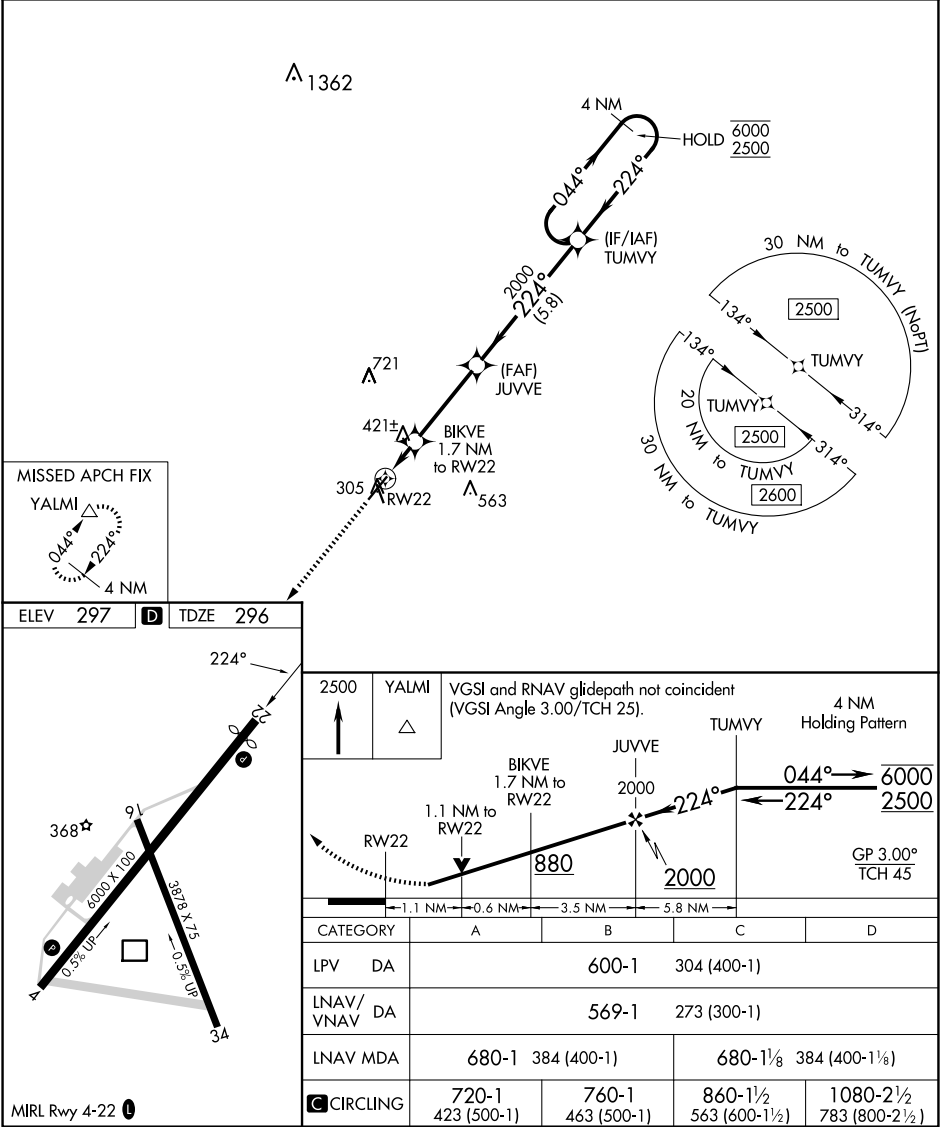


| | | | |
|--|------------------------|-----------------------------|---|
| WAAS CH 93803 W22A | APP CRS 224° | Rwy Idg TDZE Apt Elev | 5628 296 297 |
|--|------------------------|-----------------------------|---|

RNAV (GPS) RWY 22

MOULTRIE MUNI (MGR)

| | | | |
|---|-----------------------------------|--------------------------|---|
| RNP APCH - GPS. | | | MISSED APPROACH: Climb to 2500 direct YALMI and hold. |
| ▼ ▲ Rwy 22 helicopter visibility reduction below ¾ SM NA. Circling Rwy 16, 34 NA at night. For uncompensated Baro-VNAV systems, LNAV/VNAV NA below -15°C or above 54°C. | | | |
| AWOS-3PT 118.925 | VALDOSTA APP CON ★ 126.6 285.6 | UNICOM 122.8 (CTAF) 0 | |



SE-4, 07 AUG 2025 to 04 SEP 2025

SE-4, 07 AUG 2025 to 04 SEP 2025