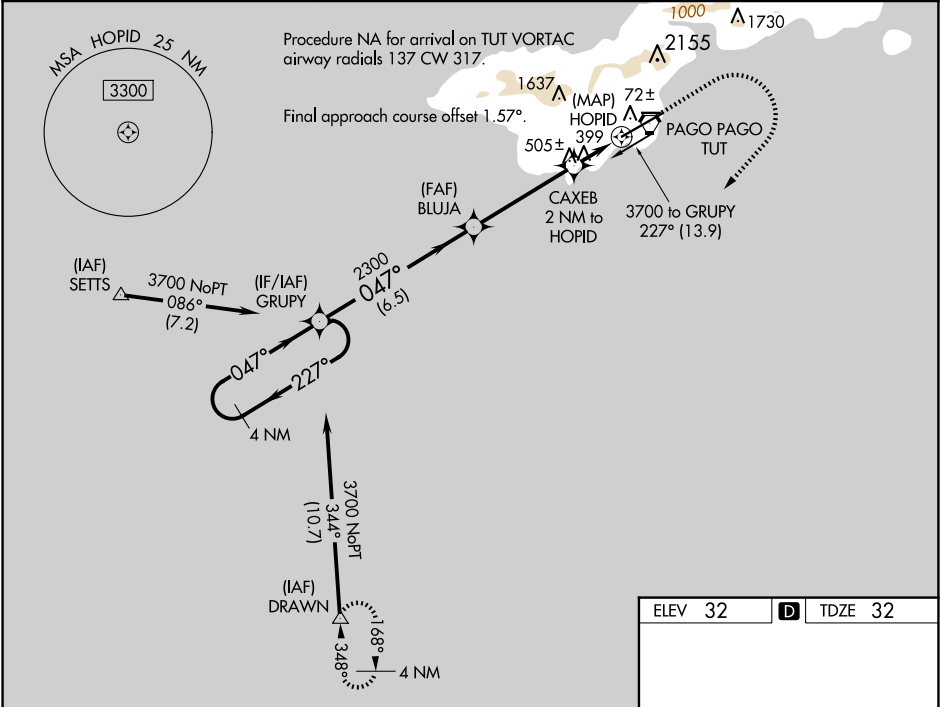


APP CRS	Rwy Ldg	8200
047°	TDZE	32
	Apt Elev	32

RNAV (GPS) RWY 5
PAGO PAGO INTL (PPG) (NSTU)

RNP APCH.	<p>⚠ For uncompensated Baro-VNAV systems, LNAV/VNAV NA below 22°C or above 54°C. When local altimeter setting not received, procedure NA. Circling NA northwest of Rwy 5-23. Rwy 5 helicopter visibility reduction below ¾ SM NA. Inop table does not apply to LNAV Cats A/B. For inop ALS, increase LNAV/VNAV all Cats visibility to 1¾ SM and LNAV Cats C/D visibility to 2 SM.</p>	MALSRL 	MISSED APPROACH: (Maintain 185 K max until 760) Climb to 760 then climbing right turn to 4000 direct DRAWN and hold.
-----------	---	------------	---

FALEOLO APP CON 118.1 6.553 (HF)	CTAF 122.9	118.30
-------------------------------------	---------------	--------



4 NM Holding Pattern		VGSI and RNAV glidepath not coincident (VGSI Angle 3.25/TCH 57).		760	4000	DRAWN
3700		2300		* LNAV only		
GP 3.25° TCH 51		2300		CAXEB 2 NM to HOPID		
6.5 NM		4.2 NM		HOPID		
CATEGORY		A		B		
LNAV/VNAV DA		551-1		519 (600-1)		
LNAV MDA		760-1		728 (800-1)		
CIRCLING		760-1		728 (800-1)		
		820-2 ¼		788 (800-2 ¼)		
		860-2 ¾		828 (900-2 ¾)		
HIRL Rlys 5-23 and 8-26						

PAC, 07 AUG 2025 to 02 OCT 2025

PAC, 07 AUG 2025 to 02 OCT 2025