

LOC I-ANB	APP CRS	Rwy Idg	7000
111.5	052°	TDZE	595
		Apt Elev	612

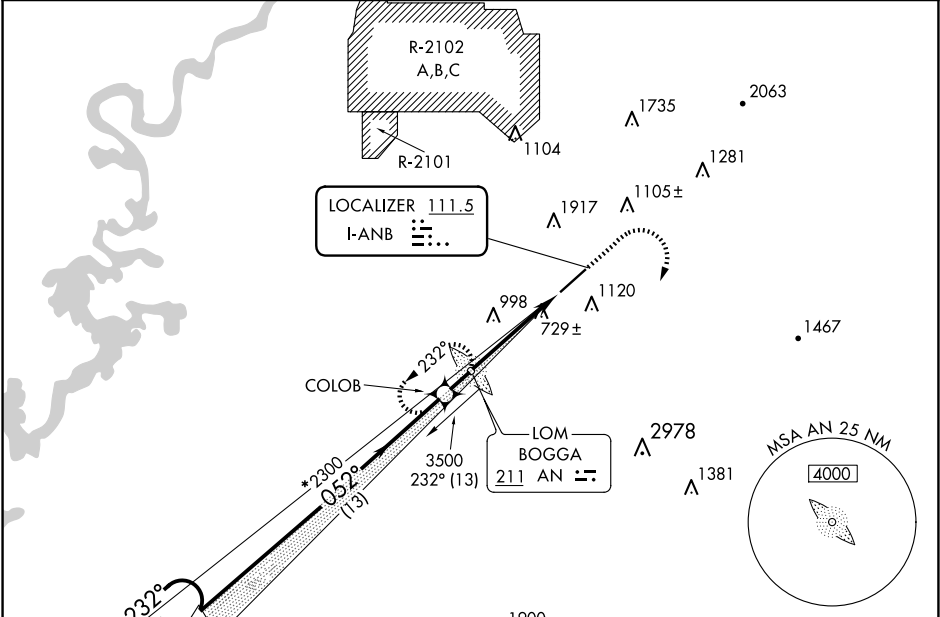
ILS Z or LOC Z RWY 5  
ANNISTON RGNL (ANB)

**⚠** Circling NA north of Rwy 5-23. ADF required. When local altimeter setting not received, use Gadsden altimeter setting: increase DA to 975 and all visibilities ¼ SM: all MDAs 80 feet, and all Cat C visibilities ½ SM. For inop ALS increase S-ILS 5 all Cats visibility to 1 SM. For inop ALS when using Gadsden altimeter setting, increase S-ILS 5 all Cats visibility to 1¼ SM.

**MALSR**

**MISSED APPROACH:** Climb to 1600 then climbing right turn to 4000 on heading 110° then on BOGGA LOM 260° course to BOGGA LOM and hold.

ASOS	BIRMINGHAM APP CON	CTAF	UNICOM
119.675	132.15 285.45	123.6	123.0



**ADF REQUIRED**

LOC restricted beyond 16° right of course.

One Minute Holding Pattern

UINZ VUZ 42.4

GS 3.00° TCH 40

COLOB

AN BOGGA LOM

\*LOC only.

2400

\*2300

11.8 NM

1.2 NM

4.3 NM

CATEGORY

A	B	C	D
S-ILS 5	909-1½	314 (300-½)	
S-LOC 5	1120-½	525 (600-½)	1120-1 525 (600-1)
			NA
CIRCLING	1420-1	808 (900-1)	1420-2¼ 808 (900-2¼)
			1208 (1300-3)

ELEV 612

TDZE 595

BOGGA

AN crs 260°

7000 1150

656

052°

REIL Rwy 23

HIRL Rwy 5-23

FAF to MAP 4.3 NM

Knots	60	90	120	150	180
Min:Sec	4:18	2:52	2:09	1:43	1:26

SE-4, 07 AUG 2025 to 04 SEP 2025

SE-4, 07 AUG 2025 to 04 SEP 2025