
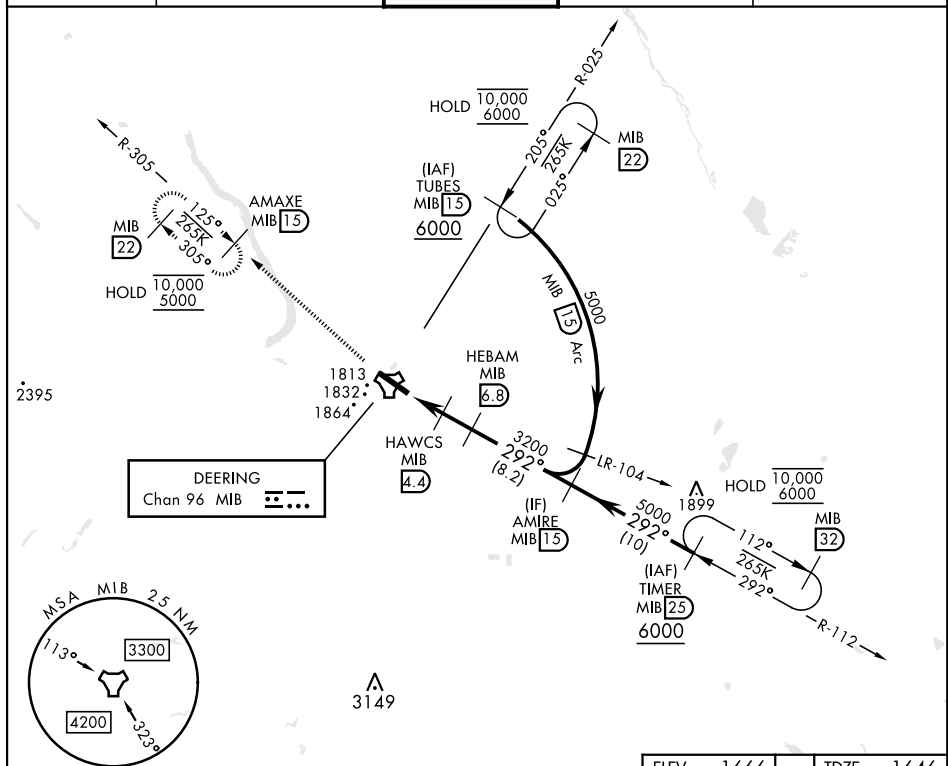
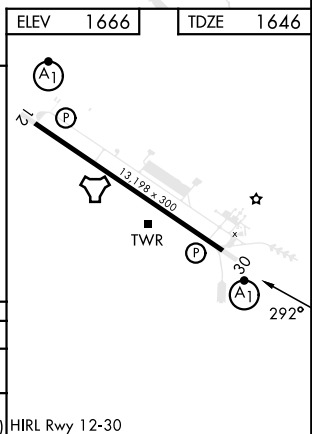
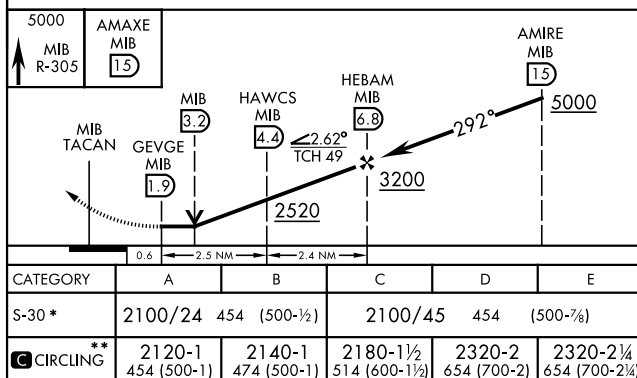


TACAN Y RWY 30

TACAN MIB Chan 96	APCH CRS 292°	Rwy Idg 13,198 TDZE 1646 Arpt Elev 1666	[USAF]	MINOT AFB (KMIB)
* When ALS inop, increase CAT AB RVR to 55, vis to 1 mile; CAT CDE vis to 1 3/8 miles. ** Circling not authorized N of Rwy 12-30			ALSF-1 	MISSED APPROACH: Climb to 5000 via MIB TACAN R-305 direct AMAXE and hold.
ATIS ★ 278.8	MINOT APP CON 119.6 363.8	MINOT TOWER ★ 120.65 253.5	GND CON 134.0 275.8	CLNC DEL 326.2



EMERG SAFE ALT 100 NM 4700



MINOT, NORTH DAKOTA

48°25'N-101°21'W

MINOT AFB (KMIB)

Amdt 1 16MAY24

TACAN Y RWY 30

NC-1, 07 AUG 2025 to 04 SEP 2025

NC-1, 07 AUG 2025 to 04 SEP 2025