

MINOT, NORTH DAKOTA

RNAV (GPS) Y RWY 12

WAAS CH 51051 W12B	APCH CRS 118°	Rwy ldg THRE 13,198 Arpt Elev 1666
--------------------------	------------------	--

- (USAF)

MINOT AFB (KMIB)

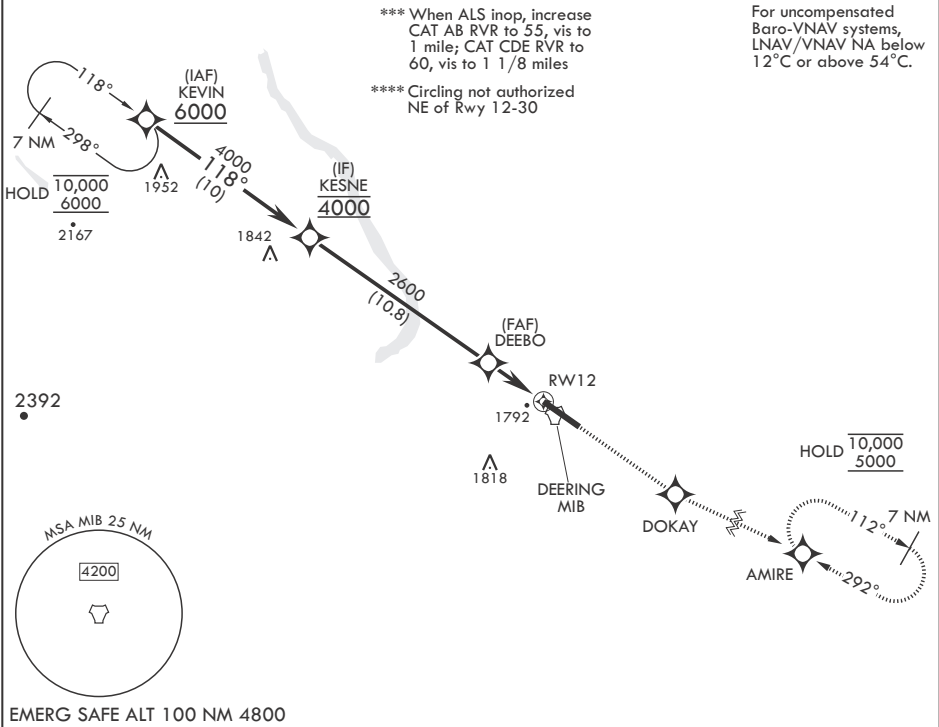
RNP APCH-GPS

\* When ALS inop, increase RVR to 40, vis to 3/4 mile.  
\*\* When ALS inop, increase RVR to 60, vis to 1 1/8 miles.



MISSED APPROACH: Climb to 5000 direct DOKAY, track 108° to AMIRE and hold.

ATIS★ 278.8	APP CON 119.6 363.8	TOWER★ 120.65 253.5	GND CON 134.0 275.8	CLNC DEL 326.2
----------------	------------------------	------------------------	------------------------	-------------------



KEVIN 6000	118°	KESNE 4000	DEEBO 2600	1.4 NM to RWY 12	3.3 NM	RWY 12	5000	DOKAY	tr 108°	AMIRE	ELEV 1666	THRE 1666
GP 2.50° TCH 48												
CATEGORY	A	B	C	D	E							
LPV DA*		1866/24	200		(200-1/2)							
LNAV/VNAV DA**		2057/35	391		(400-5/8)							
LNAV MDA***		2080/24 414 (500-1/2)	2080/40 414 (500-3/4)									
CIRCLING****	2120-1 454 (500-1)	2140-1 474 (500-1)	2180-1 514 (600-1 1/2)	2320-2 654 (700-2)	2320-2 654 (700-2 1/4)							

HIRL all Rwys

MINOT, NORTH DAKOTA

48°25'N - 101°21'W

MINOT AFB (KMIB)

Orig 15JUN23

RNAV (GPS) Y RWY 12

NC-1, 07 AUG 2025 to 04 SEP 2025

NC-1, 07 AUG 2025 to 04 SEP 2025