
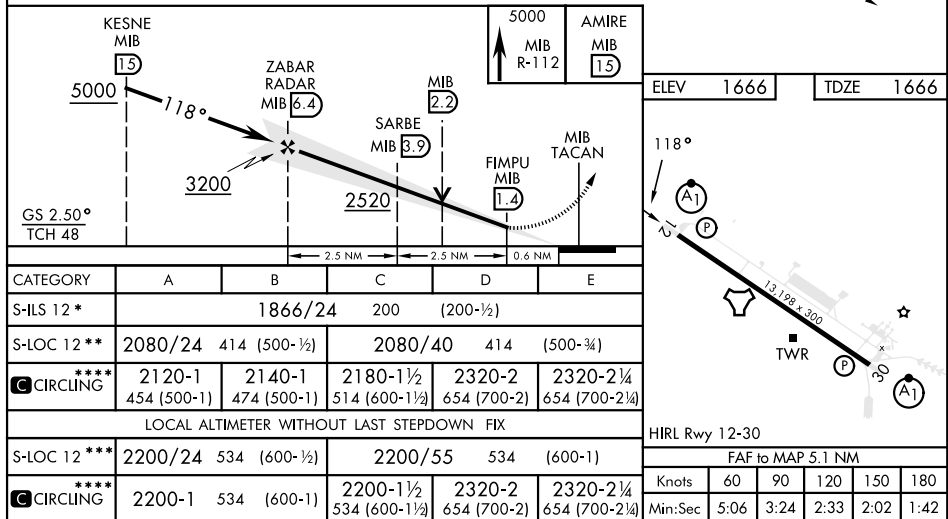
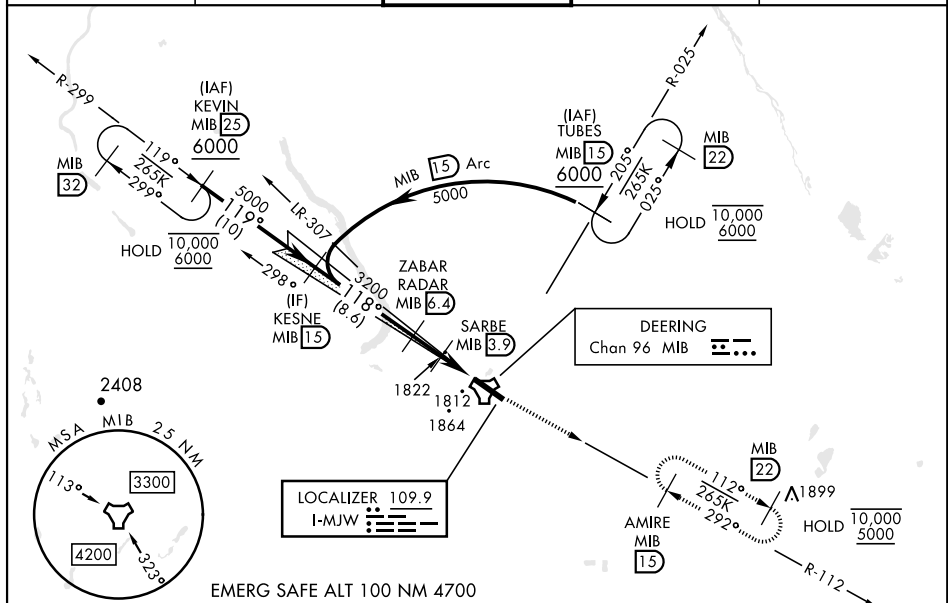


## ILS or LOC Y RWY 12

LOC I-MJW <b>109.9</b>	APCH CRS <b>118°</b>	Rwy Idg <b>13,198</b> TDZE <b>1666</b> Arpt Elev <b>1666</b>	[USAF]	MINOT AFB (KMIB)
RADAR or DME required.			ALSF-1 	MISSED APPROACH: Climb to 5000 via MIB TACAN R-112 direct AMIRE and hold.
* When ALS inop, increase RVR to 40 and vis to ¾ mile. ** When ALS inop, increase CAT AB RVR to 55 and vis to 1 mile; CAT CDE RVR to 60, vis to 1½ miles. *** When ALS inop, increase CAT AB RVR to 55, vis to 1 mile, CAT CDE vis to 1½ miles. **** Circling not authorized N of Rwy 12-30.				
ATIS <b>278.8</b>	MINOT APP CON <b>119.6 363.8</b>		MINOT TOWER <b>120.65 253.5</b>	GND CON <b>134.0 275.8</b>  CLNC DEL <b>326.2</b>



NC-1, 07 AUG 2025 to 04 SEP 2025

NC-1, 07 AUG 2025 to 04 SEP 2025