

HI-TACAN Z RWY 30

TACAN MI
Chan 96

APCH CRS
292°

Rwy Idg	13,198
TDZE	1646
Arpt Elev	1666

[USAF]

MINOT AFB (KMIB)

* When ALS inop, increase CAT CDE vis to 1 $\frac{3}{8}$ miles.
** Circling not authorized N of Rwy 12-30.

ALSF-1

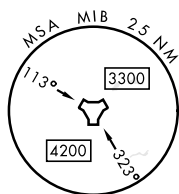
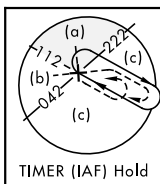
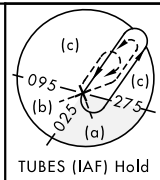
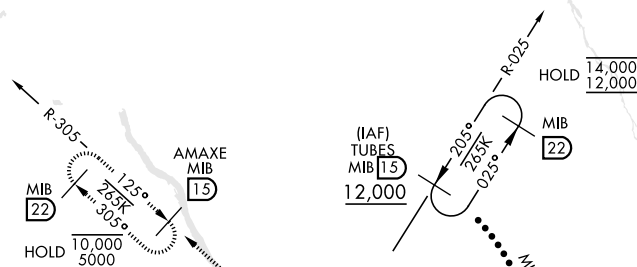
MISSED APPROACH: Climb to 5000 via
MIB TACAN R-305 direct AMAXE and hold.

ATIS ★
278.8

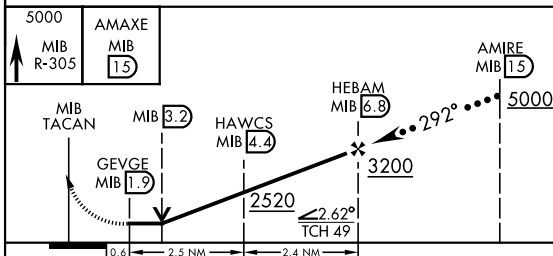
MINOT APP CON
119.6 363.8

MINOT TOWER ★
120.65 253.5

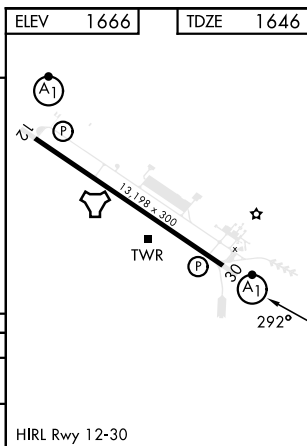
GND CON
134.0 275.8

CLNC DEL
326.2

EMERG SAFE ALT 100 NM 4700



CATEGORY	C	D	E
S-30 *	2100/45 454 (500-7%)		
C CIRCLING **	2180-1½ 514 (600-1½)	2320-2 654 (700-2)	2320-2¼ 654 (700-2¼)



MINOT, NORTH DAKOTA

48°25'N-101°21'W

MINOT AFB (KMIB)

Amdt 1 16MAY24

HI-TACAN Z RWY 30

NC-1, 07 AUG 2025 to 04 SEP 2025