

LOC I-MIB	APCH CRS	Rwy Idg
109.9	298°	13,198
		TDZE 1646
		Arpt Elev 1666

[USAF]

MINOT AFB (KMIB)

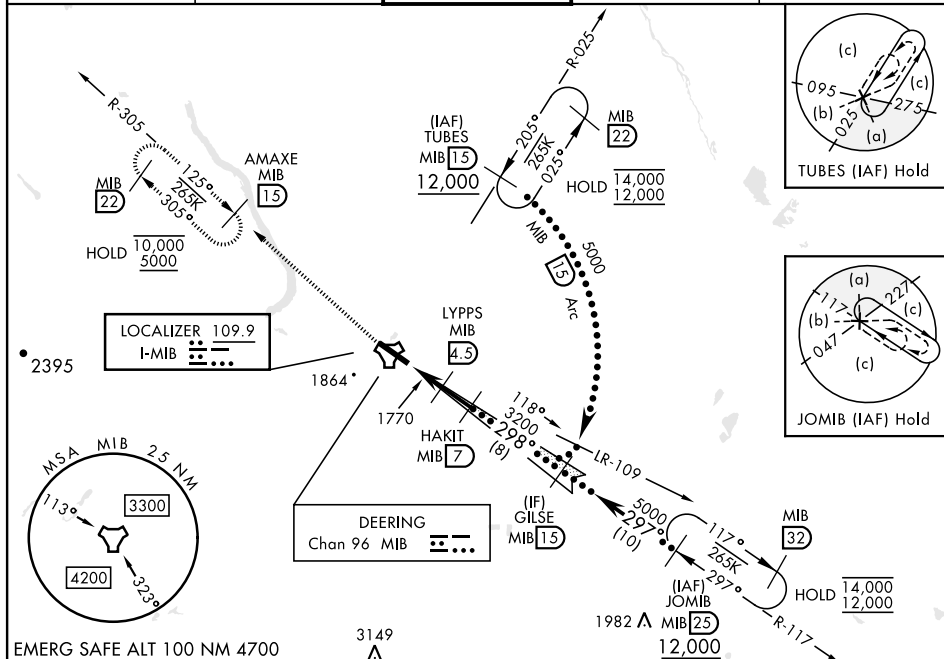
RADAR or DME required.

* When ALS inop, increase RVR to 40, vis to $\frac{3}{4}$ mile.
** When ALS inop, increase RVR to 55, vis to 1 mile.
*** Circling Not Authorized N of Rwy 12-30.
**** When ALS inop, increase vis to $1\frac{1}{2}$ miles.



MISSED APPROACH: Climb to 5000 via
MIB TACAN R-305 direct AMAXE and hold.

ATIS ★	MINOT APP CON	MINOT TOWER ★	GND CON	CLNC DEL
278.8	119.6 363.8	120.65 253.5	134.0 275.8	326.2



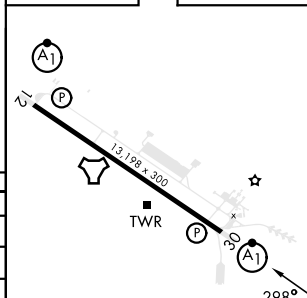
EMERG SAFE ALT 100 NM 4700

Diagram illustrating a climb profile with obstacles and distances:

- Obstacles:** MIB R-305, AMAXE, MIB 15, MIB TACAN, FAREG MIB 1.9, MIB 2.6, LYPPS MIB 4.5, HAKIT MIB 7, GILSE MIB 15.
- Distances:** 0.6 NM, 2.6 NM, 2.5 NM.
- Altitudes:** 2500, 3200, 5000.
- Angles:** 298°.
- Gradients:** GS 2.50°, TCH 49.

CATEGORY	C	D	E
S-ILS 30*	1846/24	200 (200-½)	
S-LOC 30**	2020/35	374 (400-¾)	
C CIRCLING ***	2180-1½ 514 (600-1½)	2320-2 654 (700-2)	2320-2¼ 654 (700-2¼)
LOCAL ALTIMETER WITHOUT LAST STEPDOWN FIX			
S-LOC 30****	2140/50	494 (500-1)	
C CIRCLING ***	2180-1½ 514 (600-1½)	2320-2 654 (700-2)	2320-2¼ 654 (700-2¼)

ELEV 1666 TDZE 1646



HIRL Rwy 12-30

FAF to MAP 5.2 NM

Knots	120	140	160	180	200
Min:Sec	2:36	2:14	1:57	1:44	1:34