

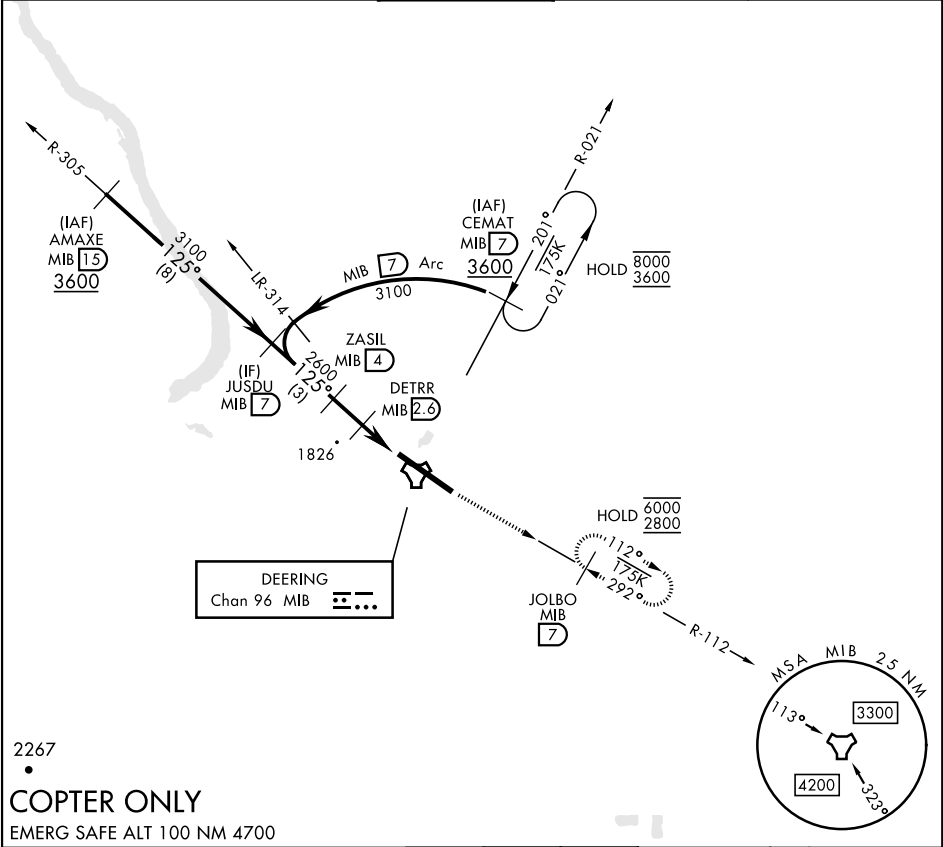
COPTER TACAN 125°

TACAN MIB Chan 96	APCH CRS 125°	Rwy Idg 13,198 TDZE 1666 Arpt Elev 1666
-----------------------------	-------------------------	--

[USAF]

MINOT AFB (KMIB)

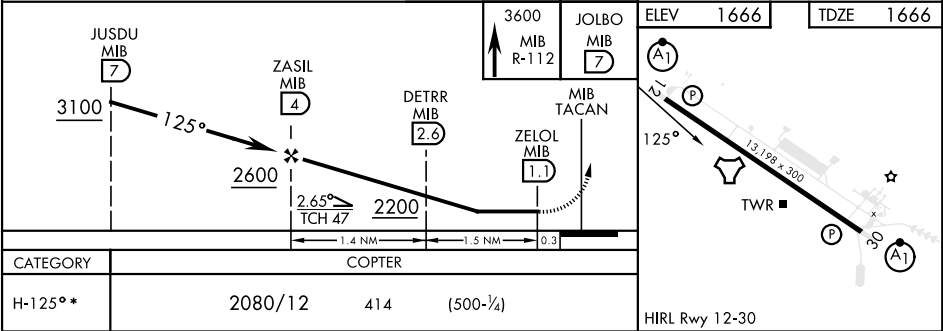
* When ALS inop, increase RVR to 28 and vis to ½ mile.			ALS F-1 	MISSED APPROACH: Climb to 3600 via MIB TACAN R-112 direct JOLBO and hold.
ATIS ★ 278.8	MINOT APP CON 119.6 363.8	MINOT TOWER ★ 120.65 253.5	GND CON 134.0 275.8	CLNC DEL 326.2



2267

COPTER ONLY

EMERG SAFE ALT 100 NM 4700



COPTER TACAN 125°