

MINOT, NORTH DAKOTA

COPTER RNAV (GPS) RWY 30

WAAS CH 91355 W30A	APCH CRS 298°	Rwy ldg TDZE 1646 Arpt Elev 1666
--------------------------	------------------	--

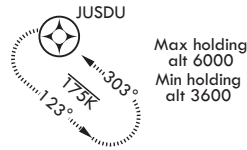
AL-5013 (USAF)

MINOT AFB (KMIB)

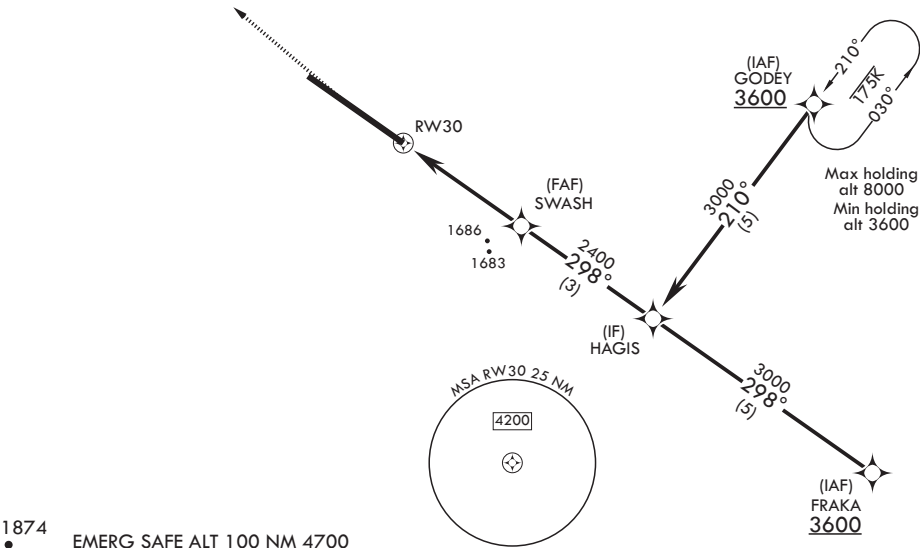
* When ALS inop, increase CAT A RVR to 40, vis to 3/4 mile. ** When ALS inop, increase CAT A vis to 1 5/8 miles. *** When ALS inop, increase CAT A RVR to 55, vis to 1 mile.	ALSF-1 	MISSED APPROACH: Climb to 2100 then climbing right turn to 3600 direct JUSDU and hold, continue climb-in-hold to 3600.
--	---	--

ATIS ★ 278.8	APP CON 119.6 363.8	TOWER ★ 120.65 253.5	GND CON 134.0 275.8	CLNC DEL 326.2
-----------------	------------------------	-------------------------	------------------------	-------------------





**** Circling NA NE of Rwy 12-30.

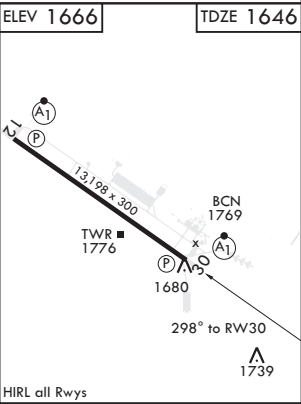


For uncompensated Baro-VNAV systems, procedure NA below 12°C (54°F) or above 54°C (130°F).



1874
• EMERG SAFE ALT 100 NM 4700

  		ELEV 1666	TDZE 1646
† LNAV only	SWASH	3000	
RW30	† 1.3 NM to RW30	2400	
2.7 NM		GP 2.50° TCH 49	
CATEGORY	COPTER		
LPV DA *	1846/24	200	(200-1/4)
LNAV/VNAV DA **	2040/60	394	(400-1 1/2)
LNAV MDA ***	2040/24	394	(400-1/2)
C CIRCLING ****	2120-1	454	(500-1)



MINOT, NORTH DAKOTA

48°25'N - 101°21'W

MINOT AFB (KMIB)

Orig 19JUL18

COPTER RNAV (GPS) RWY 30