

WAAS  
CH **72601**  
**W32A**

APP CRS  
**319°**

Rwy Ldg  
TDZE  
Apt Elev  
**6500**  
**937**  
**937**

**RNAV (GPS) RWY 32**

DELAWARE COUNTY RGNL (MIE)

▼

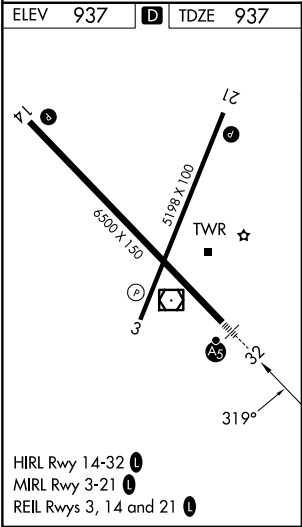
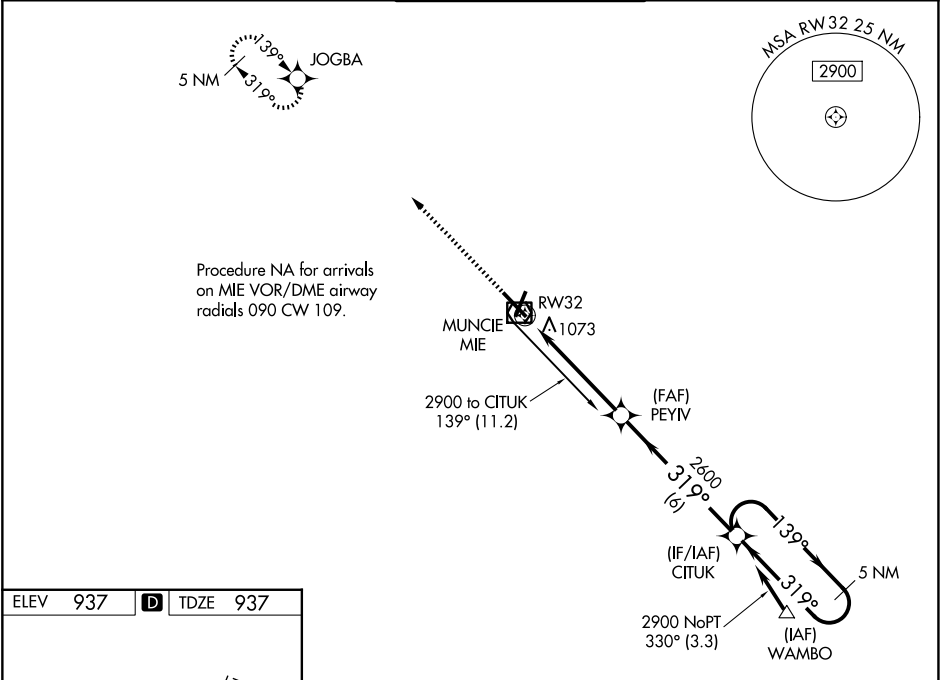
▲



For uncompensated Baro-VNAV systems, LNAV/VNAV NA below -16°C (4°F) or above 47°C (116°F). DME/DME RNP-0.3 NA. Baro-VNAV and VDP NA when using Fort Wayne Intl altimeter setting. For inop MALSR when using Fort Wayne Intl altimeter setting, increase LPV all Cats visibility to 1½ mile. When local altimeter setting not received, use Fort Wayne Intl altimeter setting and increase DA 121 feet; increase LPV and LNAV/VNAV all Cats visibility by ½ mile; increase all MDA 140 feet and LNAV visibility Cats C and D to 1¼; increase Circling visibility Cats C and D by ¼ mile. For inop MALSR, increase all LPV Cats visibility to 1 SM.

MALSR

MISSED APPROACH:  
Climb to 2800 direct JOGBA and hold.

ATIS <b>133.25</b>	INDIANAPOLIS APP CON <b>120.65 317.8</b>	MUNCIE TOWER★ <b>120.1 (CTAF) 0</b>	GND CON <b>121.9</b>	UNICOM <b>122.95</b>
-----------------------	---	--	-------------------------	-------------------------



<div>2800</div> <div>↑</div>		<div>JOGBA</div> <div></div>		<div>5 NM Holding Pattern</div>	
*LNAV only.		*1.2 NM to RW32		CITUK	
<div>RW32</div> <div></div>		<div>PEYIV</div> <div>2600</div>		<div>139°→</div> <div>←319°</div> <div>2900</div>	
<div>1.2</div>		<div>3.8 NM</div>		<div>6 NM</div>	
<div>GP 3.04°</div> <div>TCH 52</div>					
CATEGORY	A	B	C	D	
LPV DA	1241-½ 304 (400-½)				
LNAV/VNAV DA	1396-1⅛ 459 (500-1⅛)				
LNAV MDA	1460-½ 523 (600-½)		1460-1 523 (600-1)		
CIRCLING	1460-1 523 (600-1)		1480-1½ 543 (600-1½)		1560-2 623 (700-2)

EC-2, 07 AUG 2025 to 04 SEP 2025

EC-2, 07 AUG 2025 to 04 SEP 2025