

WAAS
CH **53537**
W21A

APP CRS
205°

Rwy Ldg
TDZE **935**
Apt Elev **937**

RNAV (GPS) RWY 21

DELAWARE COUNTY RGNL (MIE)

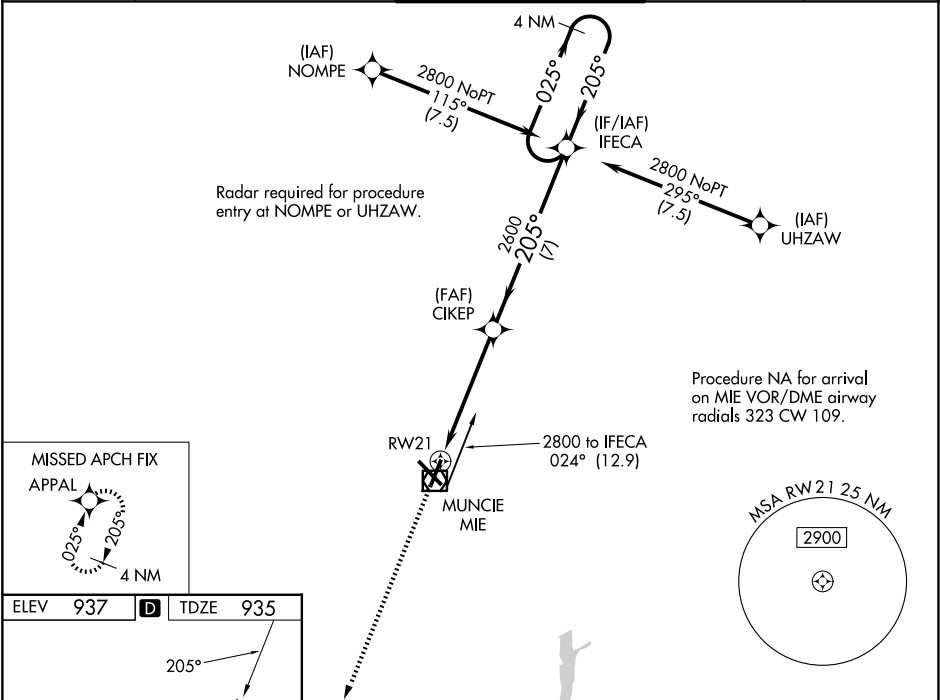
▼

▲

For uncompensated Baro-VNAV systems, LNAV/VNAV NA below -20°C (-4°F) or above 54°C (130°F). DME/DME RNP-0.3 NA. When local altimeter setting not received, use Fort Wayne Intl altimeter setting and increase all DA 121 feet and all MDA 140 feet; increase LPV all Cats and LNAV Cats C/D visibility ¾ mile and LNAV/VNAV all Cats and Circling Cats C/D visibility ½ mile. Baro-VNAV and VDP NA when using Fort Wayne Intl altimeter setting. Helicopter visibility reduction below ¾ SM NA.

MISSED APPROACH:
Climb to 2800 direct APPAL and hold.

ATIS 133.25	INDIANAPOLIS APP CON 120.65 317.8	MUNCIE TOWER ★ 120.1 (CTAF) 0	GND CON 121.9	UNICOM 122.95
-----------------------	---	---	-------------------------	-------------------------



ELEV 937	D	TDZE 935
<div>2800</div> <div>APPAL</div> <div>*LNAV only</div>		
<div>CIKEP</div> <div>2600</div> <div>IFECA</div> <div>4 NM Holding Pattern</div> <div>2800</div> <div>GP 3.00° TCH 45</div>		
<div>RW21</div> <div>1.3</div> <div>3.8 NM</div> <div>7 NM</div>		
CATEGORY	A	B
LPV DA	1195-7/8	260 (300-%)
LNAV/VNAV DA	1351-13/8	416 (500-1%)
LNAV MDA	1400-1 465 (500-1)	1400-13/8 465 (500-1%)
CIRCLING	1460-1 523 (600-1)	1500-11/2 563 (600-11/2) 1600-2 663 (700-2)