

LOC I-JNK <b>109.1</b>	APP CRS <b>319°</b>	Rwy Ldg TDZE Apt Elev <b>6500</b> <b>937</b> <b>937</b>
---------------------------	------------------------	--

ILS or LOC RWY 32  
DELAWARE COUNTY RGNL (MIE)

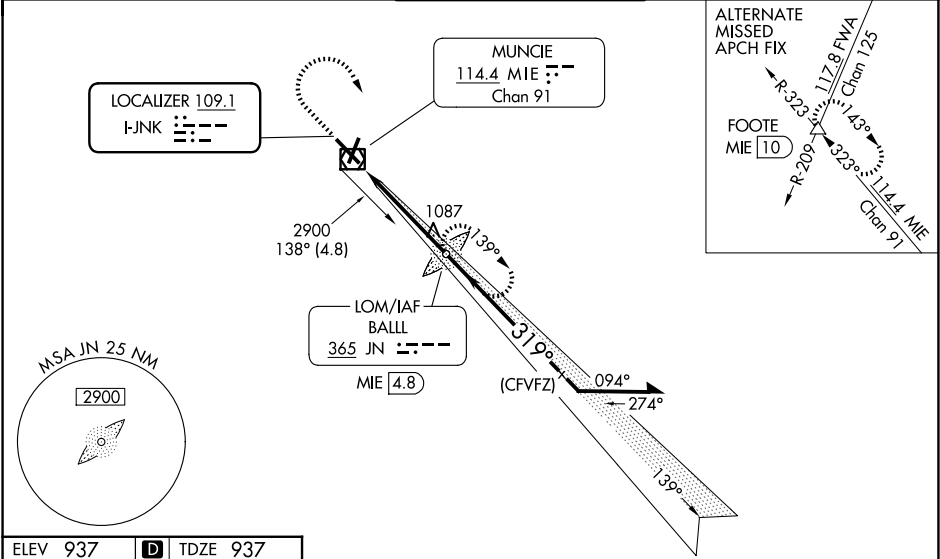
ADF or DME required.

When control tower closed, except for operators with approved weather reporting service, use FWA allimeter setting. For inop ALS, increase S-LOC 32 visibility Cats A and B to 1 SM, Cat C to 1½ SM. For inop ALS when using FWA allimeter setting, increase S-ILS 32 visibility all Cats to 1 SM and increase S-LOC 32 Cats C and D to 1½ SM. When local altimeter setting not received, use FWA allimeter setting and increase S-ILS 32 DA to 1258 feet; increase all MDAs 140 feet; increase S-LOC 32 visibility Cats C and D ½ SM and Circling visibility Cats C and D ½ SM. VDP NA when using FWA allimeter setting.

MALSR

MISSED APPROACH: Climb to 1460 then climbing right turn to 2900 direct BALL LOM and hold.

ATIS <b>133.25</b>	INDIANAPOLIS APP CON <b>120.65 317.8</b>	MUNCIE TOWER ★ <b>120.1 (CTAF) 0</b>	GND CON <b>121.9</b>	UNICOM <b>122.95</b>
-----------------------	---	---	-------------------------	-------------------------



ELEV 937 D TDZE 937

HIRL Rwy 14-32  
MIRL Rwy 3-21  
REIL Rwys 3, 14 and 21

FAF to MAP 4.6 NM

Knots	60	90	120	150	180
Min:Sec	4:36	3:04	2:18	1:50	1:32

1460	2900	JN	JN LOM BALL MIE 4.8	Remain within 10 NM
1.2	3.4 NM	2462	2500	GS 3.00° TCH 52
CATEGORY	A	B	C	D
S-ILS 32	1137-½	200 (200-½)		
S-LOC 32	1380-½	443 (500-½)	1380-¾	443 (500-¾)
CIRCLING	1460-1	523 (600-1)	1500-1½	1600-2
			563 (600-1½)	663 (700-2)