

GRAND FORKS, NORTH DAKOTA

TACAN RWY 36

| | | |
|-----------------------|------------------|---|
| TACAN RDR Chan 111 | APCH CRS 351° | Rwy Idg 12,351 TDZE 911 Arpt Elev 911 |
|-----------------------|------------------|---|

- (USAF)

GRAND FORKS AFB (KRDR)

* When ALS inop, increase CAT AB RVR to 55, vis to 1 mile, CAT CDE vis to 1 1/2 miles.
** Circling E of Rwy 18-36 not authorized.

| | |
|--------|--|
| ALSF-1 | MISSED APPROACH: Climb to 3000 on RDR TACAN R-356 to FRISK and hold. |
|--------|--|

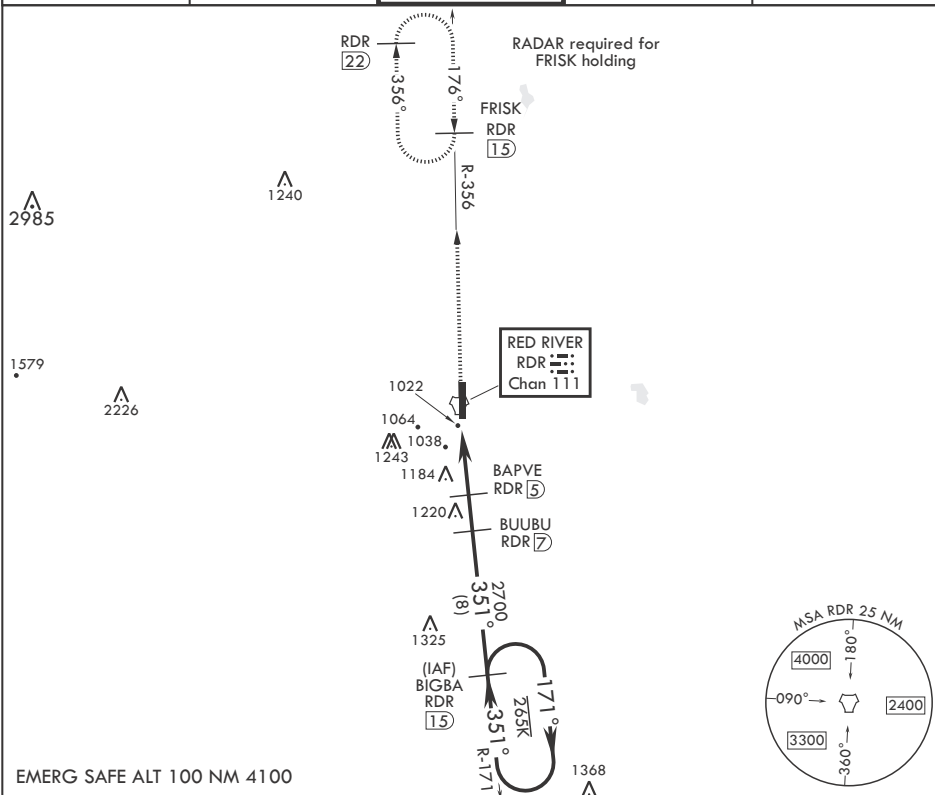
| |
|--------|
| ATIS |
| 273.45 |

APP CON★
118.1 318.1

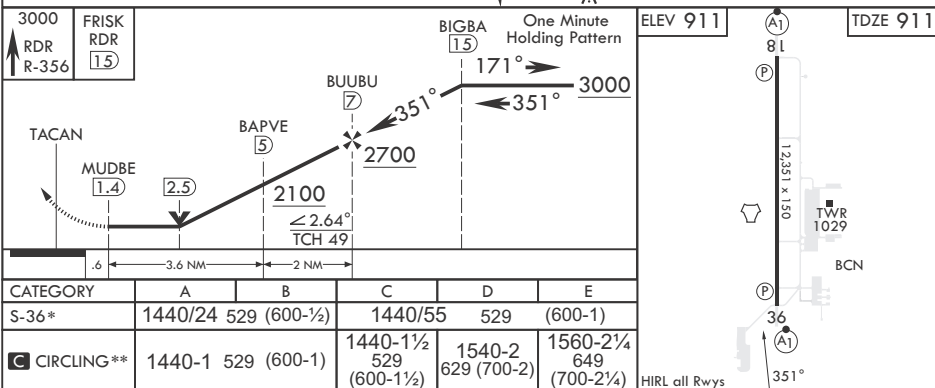
RED RIVER TOWER ★
124.9 349.0

GND CON
119.15 275.

CLNC DEL
119.15 360.7



EMERG SAFE ALT 100 NM 4100



GRAND FORKS, NORTH DAKOTA

47°58'N - 97°24'W

GRAND FORKS AFB (KRDR)

Orig 10AUG23

TACAN RWY 36

NC-1, 07 AUG 2025 to 04 SEP 2025

NC-1, 07 AUG 2025 to 04 SEP 2025