

TACAN RWY 18

TACAN RDR Chan 111	APCH CRS 182°	Rwy Idg 12,351 TDZE 900 Arpt Elev 911
-----------------------	------------------	---

- (USAF)

GRAND FORKS AFB (KRDR)

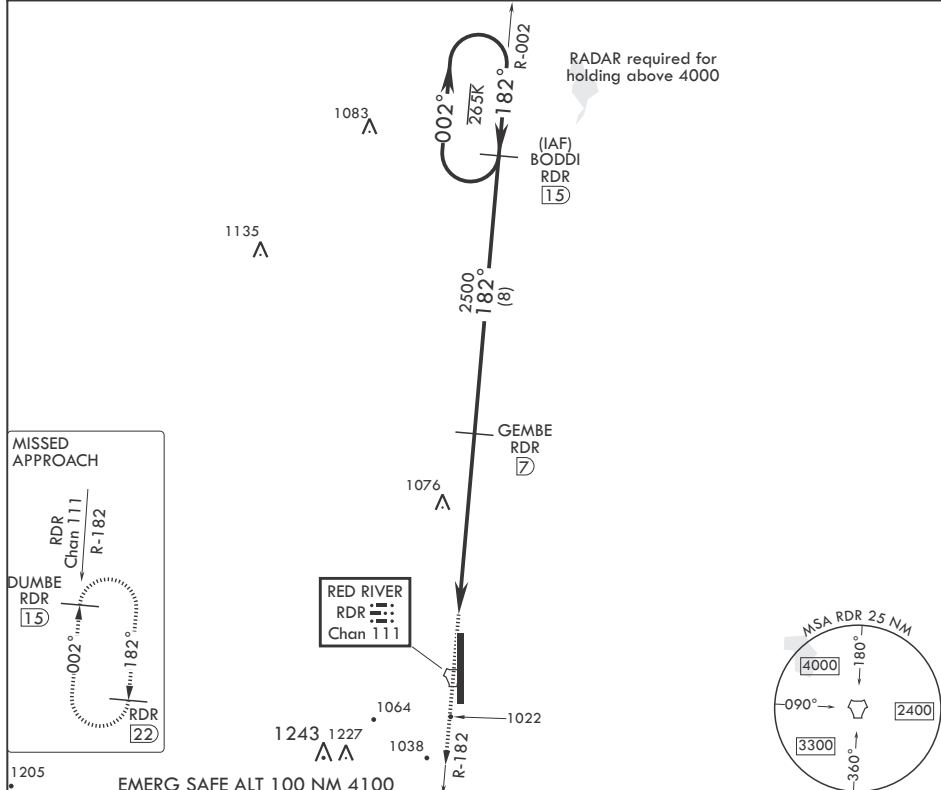
* When ALS inop, increase CAT AB RVR to 55, vis to 1 mile; CAT CDE vis to 1 1/4 miles.

** Circling E of Rwy 18-36 not authorized.

ALSF-1

MISSED APPROACH: Climb to 3000 on RDR TACAN R-182 to DUMBE and hold.

ATIS 273.45	APP CON★ 118.1 318.1	RED RIVER TOWER★ 124.9 349.0	GND CON 119.15 275.8	CLNC DEL 119.15 360.7
----------------	-------------------------	---------------------------------	-------------------------	--------------------------



3000 RDR R-182 DUMBE RDR 15 One Minute Holding Pattern ELEV 911 182° TDZE 900

TACAN PAROC 1.8 2.7 GEMBE 7 2500 BODDI 15 002° 182° 3000

≤ 2.56° TCH 49

.5 .5.2 NM

CATEGORY	A	B	C	D	E
S-18*	1340/24 440 (500-½)		1340/40 440 (500-¾)		
CIRCLING**	1340-1 429 (500-1)	1380-1 469 (500-1)	1380-1½ 469 (500-1½)	1540-2 629 (700-2)	1560-2¼ 649 (700-2¼)

HIRL all Rwy's

81 12,351 x 150 36 182° BCN

HIRL all Rwys

GRAND FORKS, NORTH DAKOTA

47°58'N - 97°24'W

GRAND FORKS AFB (KRDR)

Orig 10AUG23

TACAN RWY 18

NC-1, 07 AUG 2025 to 04 SEP 2025

NC-1, 07 AUG 2025 to 04 SEP 2025