

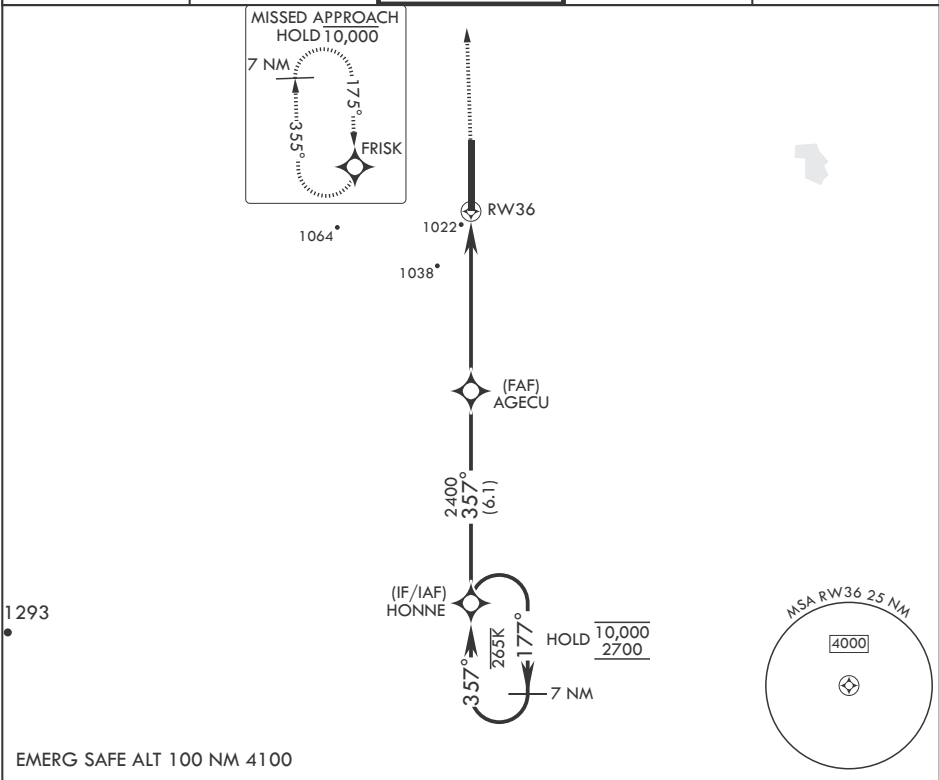
APCH CRS	Rwy Idg	12,351
357°	TDZE	911
	Arpt Elev	911

- (USAF)

GRAND FORKS AFB (KRDR)

RNP APCH-GPS	ALSF-1	MISSED APPROACH: Climb to 1500 then climbing left turn to 3000 direct FRISK and hold.
* When ALS inop, increase CAT AB RVR to 55, vis to 1 mile; CAT CDE vis to 1 1/2 miles.		
** Circling E of Rwy 18-36 not authorized.		

ATIS 273.45	APP CON ★ 118.1 318.1	RED RIVER TOWER ★ 124.9 349.0	GND CON 119.15 275.8	CLNC DEL 119.15 360.7
----------------	--------------------------	----------------------------------	-------------------------	--------------------------



7 NM Holding Pattern	1500	3000	FRISK	ELEV 911	TDZE 911
10,000 2700	177°	357°	HONNE	AGECU	2400
				1.7 NM to RW36	RW36
				2.63° TCH 49	5.2 NM
CATEGORY	A	B	C	D	E
LNAV MDA*	1440/24	529 (600-½)	1440/55	529 (600-1)	
CIRCLING**	1440-1	529 (600-1)	1440-1½ 529 (600-1½)	1540-2 629 (700-2)	1560-2¼ 649 (700-2¼)

NC-1, 07 AUG 2025 to 04 SEP 2025

NC-1, 07 AUG 2025 to 04 SEP 2025