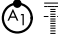


ILS or LOC RWY 36

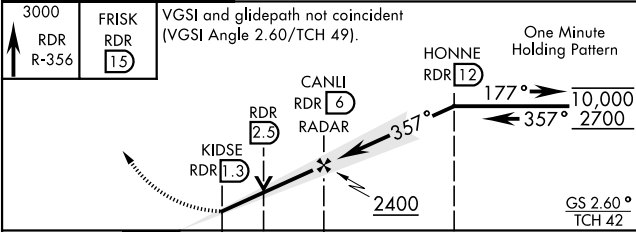
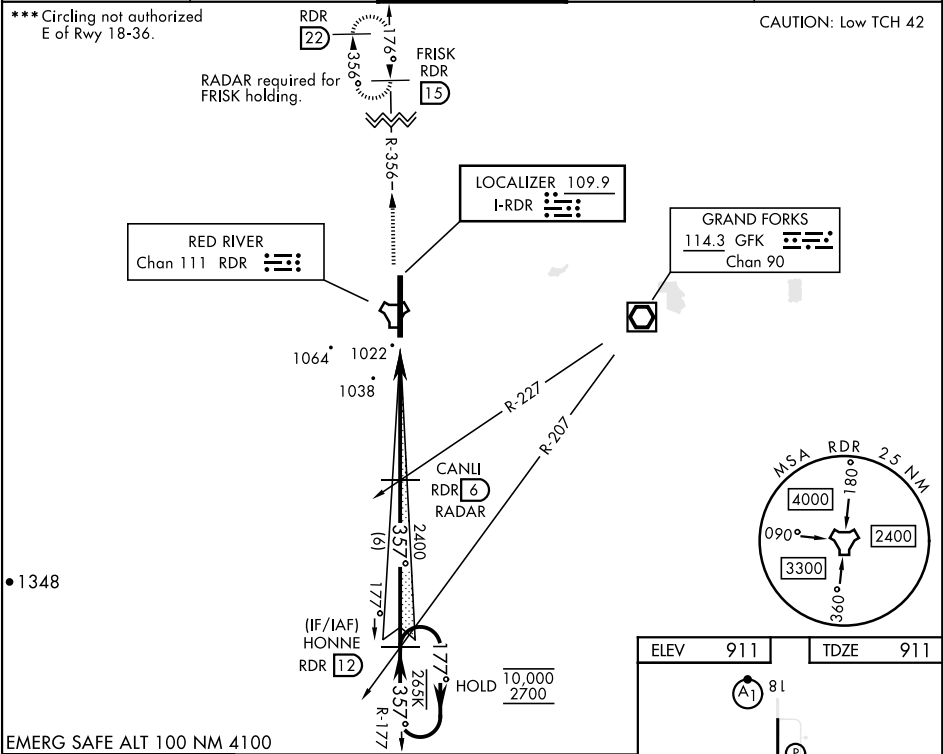
LOC I-RDR 109.9	APCH CRS 357°	Rwy Idg 12,351 TDZE 911 Arpt Elev 911
---------------------------	-------------------------	--

[USAF]

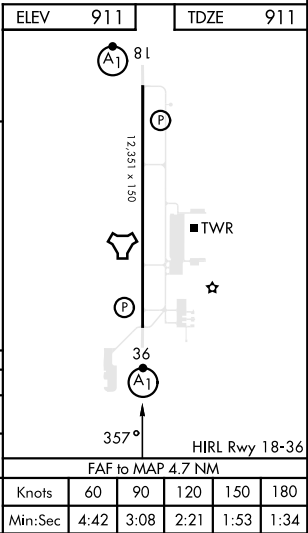
GRAND FORKS AFB (KRDR)

RADAR or DME required	ALSIF-1 	MISSED APPROACH: Climb to 3000 on RDR TACAN R-356 to FRISK and hold.
-----------------------	--	--

ATIS 273.45	APP CON ★ 118.1 318.1	RED RIVER TOWER ★ 124.9 349.0	GND CON 119.15 275.8	CLNC DEL 119.15 360.7
-----------------------	---------------------------------	---	--------------------------------	---------------------------------



CATEGORY	A	B	C	D	E
S-ILS 36 *	1111/24		200	(200-½)	
S-LOC 36 **	1440/24 529 (600-½)		1440/55	529	(600-1)
CIRCLING ***	1440-1 529 (600-1)		1440-1½ 529 (600-½)	1540-2 629 (700-2)	1560-2¼ 649 (700-2¼)



ILS or LOC RWY 36

NC-1, 07 AUG 2025 to 04 SEP 2025

NC-1, 07 AUG 2025 to 04 SEP 2025