

ILS or LOC RWY 18

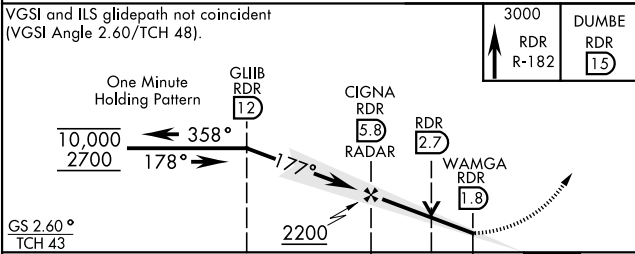
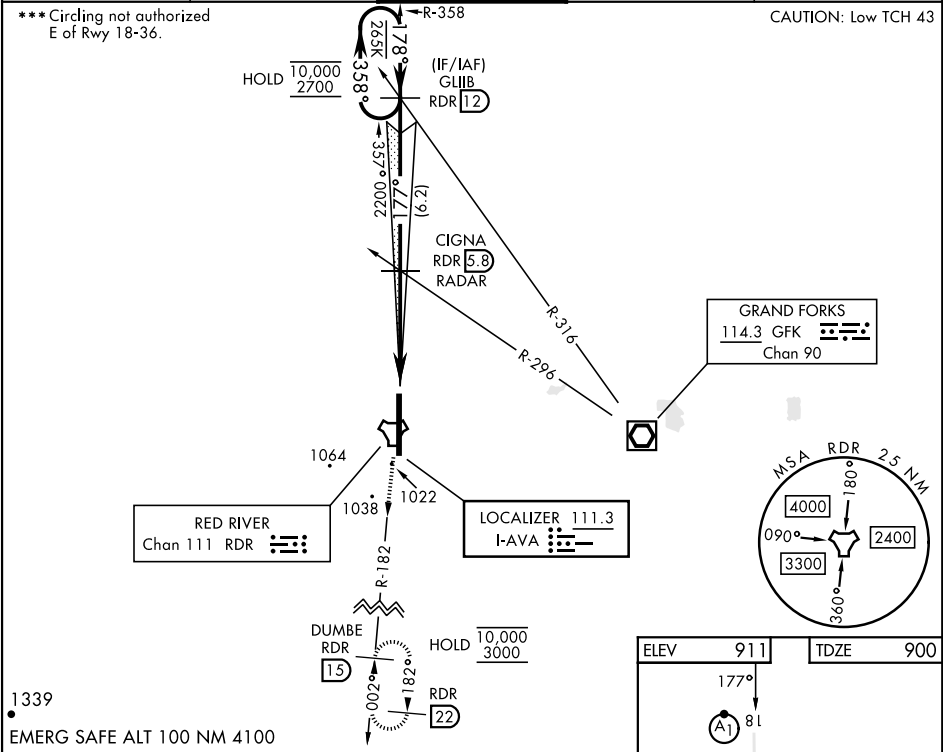
LOC I-AVA	APCH CRS	Rwy Idg
111.3	177°	12,351
		TDZE
		900
		Arprt Elev
		911

[USAF]

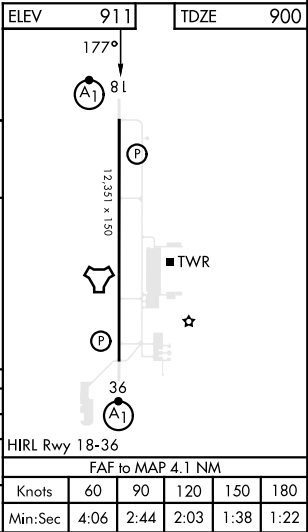
GRAND FORKS AFB (KRDR)

RADAR or DME required		ALSIF-1	MISSED APPROACH: Climb to 3000 on RDR TACAN R-182 to DUMBE and hold.
* When ALS inop, increase RVR to 40 and vis to ¾ mile. ** When ALS inop, increase CAT AB RVR to 55 and vis to 1 mile; CAT CDE vis to 1¼ miles.		(A1)	

ATIS	APP CON ★	RED RIVER TOWER ★	GND CON	CLNC DEL
273.45	118.1 318.1	124.9 349.0	119.15 275.8	119.15 360.7



		<div><div></div><div>← 4.1 NM →</div><div>0.5 NM</div><div></div></div>			
CATEGORY	A	B	C	D	E
S-ILS 18*	1100/24		200	(200-½)	
S-LOC 18**	1340/24	440 (500-½)	1340/40	440	(500-¾)
<div><div>CIRCLING</div><div>***</div></div>	1340-1 429 (500-1)	1380-1 469 (500-1)	1380-1½ 469 (500-1½)	1540-2 629 (700-2)	1560-2¼ 649 (700-2¼)



ILS or LOC RWY 18

NC-1, 07 AUG 2025 to 04 SEP 2025

NC-1, 07 AUG 2025 to 04 SEP 2025