

APP CRS

Rwy Idg

2560

TDZE

672

Apt Elev

673

RNAV (GPS) RWY 36

WOOD COUNTY (1G0)

RNP APCH.

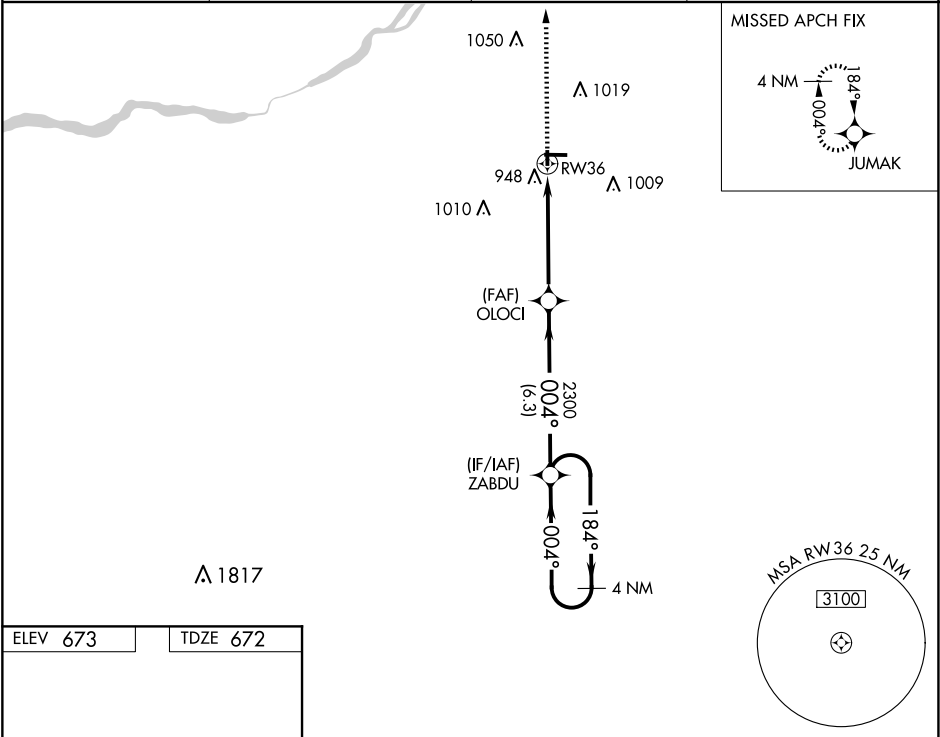
▼

NA

Rwy 36 helicopter visibility reduction below 1 SM NA. When local altimeter setting not received, use Toledo Express altimeter setting and increase all MDAs 40 feet. Straight-in and Circling Rwy 36 NA at night.

MISSED APPROACH: Climb to 2300 direct JUMAK and hold.

AWOS-3 120.725	TOLEDO APP CON 126.1 317.55	CLNC DEL 125.6	UNICOM 122.975 (CTAF) 0
-------------------	--------------------------------	-------------------	----------------------------



ELEV 673

TDZE 672

36

10

81

82

4199 X 75

2628 X 50

004°

REIL Rwy 10, 18 and 28 0

MIRL Rwy 10-28 and 18-36 0

2300

JUMAK

ZABDU

OLOCI

RW36

3.04°

TCH 40

4.9 NM

6.3 NM

184°

004°

2400

4 NM Holding Pattern

CATEGORY	A	B	C	D
LNAV MDA	1 260-1	588 (600-1)	NA	
CIRCLING	1 300-1	627 (700-1)	NA	

EC-2, 07 AUG 2025 to 04 SEP 2025

EC-2, 07 AUG 2025 to 04 SEP 2025