

VOR/DME COY

108.2

Chan 19

APP CRS

259°

Rwy ldg

9002

TDZE

40

Apt Elev

74

VOR RWY 28

HENRY E ROHLSSEN (STX)(TISX)

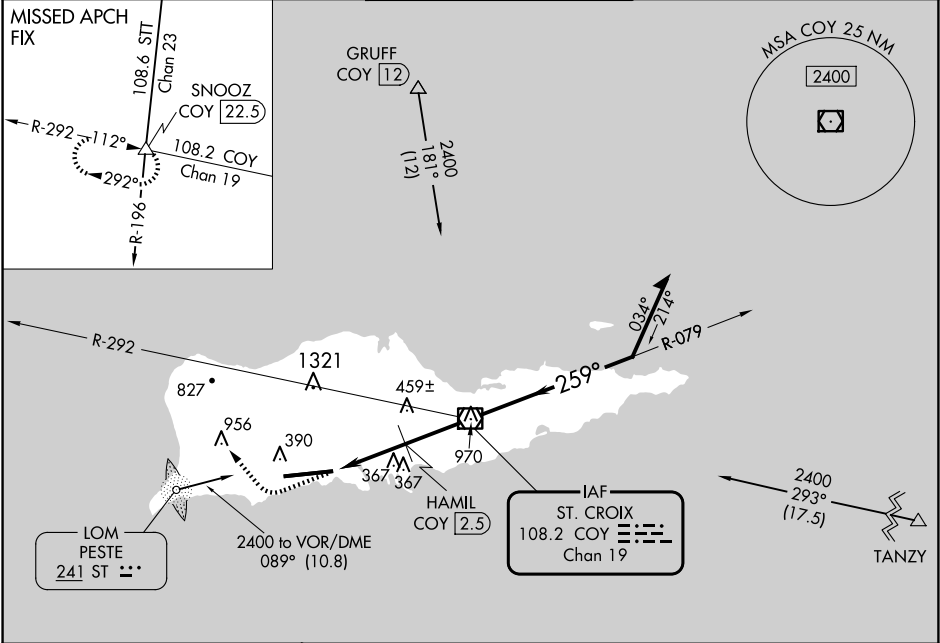
▼

⚠

Helicopter visibility reduction below 1 SM NA. Rwy 28 Straight-in and Circling minimums NA at night. When local altimeter setting not received, procedure NA. Circling NA north of Rwy 10-28.

MISSED APPROACH: Climb to 2400 then climbing right turn to 2400 via heading 330° and COY R-292 to SNOOZ Int/COY 22.5 DME and hold.

ATIS	SAN JUAN CENTER	ST. CROIX TOWER ★	GND CON	UNICOM
135.65	128.65 279.6	118.6 (CTAF) 239.3	121.7	123.0



ELEV 74

TDZE 40

2000

2400

COY

SNOOZ

↑

hdg 330°

R-292

△

VGSI and descent angles not coincident (VGSI Angle 3.00/TCH 80).

COY

HAMIL COY 2.5

COY 5

COY VOR/DME

Remain within 10 NM

10002 X 150

253

0.6% DOWN

0.4% UP

TWR 141±

REIL Rwy 28

HIRL Rwy 10-28

FAF to MAP 5 NM

CATEGORY	A	B	C	D
S-28	960-1¼	920 (900-1¼)	960-2¾	960-3
CIRCLING	960-1¼	886 (900-1¼)	960-2¾	960-3
HAMIL FIX MINIMUMS				
S-28	640-1	600 (600-1)	640-1½	640-1¾
CIRCLING	640-1	566 (600-1)	720-1¾	720-2